

## Recombinant Human REG3A Protein (Cys40-Asn164), N-His tagged

Cat. No. REG3A-5886H Lot. No. (See product label)

### SPECIFICATION

<b>Product Overview</b>	Recombinant human REG3A (Cys40-Asn164) fused with the N-His tag was expressed in E. coli.
<b>Species</b>	Human
<b>Source</b>	E.coli
<b>ProteinLength</b>	Cys40-Asn164
<b>Form</b>	Lyophilized powder/frozen liquid
<b>Molecular Mass</b>	15.99 kDa
<b>Purity</b>	> 90 % as determined by SDS-PAGE
<b>Notes</b>	For research use only.
<b>Storage</b>	Use a manual defrost freezer and avoid repeated freeze thaw cycles. Store at 2 to 8 centigrade for one week. Store at -20 to -80 centigrade for twelve months from the date of receipt.
<b>Storage Buffer</b>	0.01M PBS, pH 7.4, 0.02 % NLS
<b>Reconstitution</b>	Reconstitute in sterile water for a stock solution.

 Tel: 1-631-559-9269 1-516-512-3133

 Email: [info@creative-biomart.com](mailto:info@creative-biomart.com)  Fax: 1-631-938-8127

 45-1 Ramsey Road, Shirley, NY 11967, USA

**Shipping** They are shipped out with dry ice/blue ice unless customers require otherwise.

## GENE INFORMATION

**Gene Name** REG3A regenerating islet-derived 3 alpha [ Homo sapiens (human) ]

**Official Symbol** REG3A

**Synonyms** REG3A; regenerating islet-derived 3 alpha; pancreatitis associated protein, PAP; regenerating islet-derived protein 3-alpha; HIP; PAP1; PBCGF; REG III; REG3; REG-3-alpha; reg III-alpha; PAP homologous protein; human proislet peptide; pancreatitis-associated protein 1; proliferation-inducing protein 34; proliferation-inducing protein 42; hepatocarcinoma-intestine-pancreas; pancreatic beta cell growth factor; regenerating islet-derived protein III-alpha; PAP; PAP-H; REG-III; FLJ18565;

**Gene ID** 5068

**mRNA Refseq** NM\_002580

**Protein Refseq** NP\_002571

**MIM** 167805

**UniProt ID** Q06141

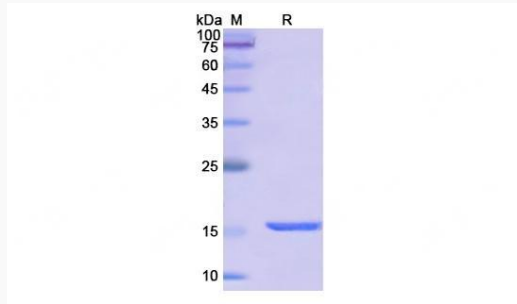
 Tel: 1-631-559-9269 1-516-512-3133

 Email: [info@creative-biomart.com](mailto:info@creative-biomart.com)  Fax: 1-631-938-8127

 45-1 Ramsey Road, Shirley, NY 11967, USA



SDS-PAGE



Tel: 1-631-559-9269 1-516-512-3133

Email: [info@creative-biomart.com](mailto:info@creative-biomart.com) Fax: 1-631-938-8127

45-1 Ramsey Road, Shirley, NY 11967, USA