

## Recombinant Rat REG3G Protein (27-174 aa), His-tagged

Cat. No. REG3G-1503R Lot. No. (See product label)

### SPECIFICATION

<b>Product Overview</b>	Recombinant Rat REG3G Protein (27-174 aa) is produced by Yeast expression system. This protein is fused with a 6xHis tag at the N-terminal. Protein Description: Full Length of Mature Protein.
<b>Species</b>	Rat
<b>Source</b>	Yeast
<b>ProteinLength</b>	27-174 aa
<b>Description</b>	Bactericidal C-type lectin which acts exclusively against Gram-positive bacteria and mediates bacterial killing by binding to surface-exposed carbohydrate moieties of peptidoglycan. Restricts bacterial colonization of the intestinal epithelial surface and consequently limits activation of adaptive immune responses by the microbiota. The uncleaved form has bacteriostatic activity, whereas the cleaved form has bactericidal activity against <i>L.monocytogenes</i> and methicillin-resistant <i>S.aureus</i> . Regulates keratinocyte proliferation and differentiation after skin injury.
<b>Form</b>	Tris-based buffer,50% glycerol
<b>Molecular Mass</b>	18.3 kDa
<b>AA Sequence</b>	EDAKEDVPTSRISCPKGSRAYGSYCYALFSVSKSWFDADLACQKRPSGHLVSVLSG SEASFVSSLIKSSGNSGQNVWIGLHDPTLGQEPNRGGWEWSNADVMNYFNWETN PSSVSGSHCGTLTRASGFLRWRENNCISELPYVCKFKA

 Tel: 1-631-559-9269 1-516-512-3133

 Email: [info@creative-biomart.com](mailto:info@creative-biomart.com)  Fax: 1-631-938-8127

 45-1 Ramsey Road, Shirley, NY 11967, USA

<b>Purity</b>	> 90% as determined by SDS-PAGE.
<b>Notes</b>	Repeated freezing and thawing is not recommended. Store working aliquots at 4 centigrade for up to one week.
<b>Storage</b>	The shelf life is related to many factors, storage state, buffer ingredients, storage temperature and the stability of the protein itself. Generally, the shelf life of liquid form is 6 months at -20 centigrade/-80 centigrade. The shelf life of lyophilized form is 12 months at -20 centigrade/-80 centigrade.
<b>Concentration</b>	A hardcopy of COA with reconstitution instruction is sent along with the products.

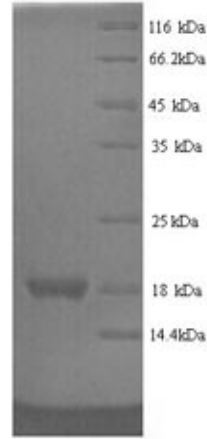
## GENE INFORMATION

<b>Gene Name</b>	Reg3g regenerating islet-derived 3 gamma [ <i>Rattus norvegicus</i> ]
<b>Official Symbol</b>	REG3G
<b>Synonyms</b>	REG3G; REG-3-gamma; reg III-gamma; Pap3; PAPIII;
<b>Gene ID</b>	24620
<b>mRNA Refseq</b>	NM_173097
<b>Protein Refseq</b>	NP_775120
<b>UniProt ID</b>	P42854

 Tel: 1-631-559-9269 1-516-512-3133

 Email: [info@creative-biomart.com](mailto:info@creative-biomart.com)  Fax: 1-631-938-8127

 45-1 Ramsey Road, Shirley, NY 11967, USA



(Tris-Glycine gel) Discontinuous SDS-PAGE (reduced) with 5% enrichment gel and 15% separation gel.

 Tel: 1-631-559-9269 1-516-512-3133

 Email: [info@creative-biomart.com](mailto:info@creative-biomart.com)  Fax: 1-631-938-8127

 45-1 Ramsey Road, Shirley, NY 11967, USA