

Recombinant Human REG3G Protein, Myc/DDK-tagged, C13 and N15-labeled

Cat. No. REG3G-2705H **Lot. No.** (See product label)

SPECIFICATION

Product Overview	REG3G MS Standard C13 and N15-labeled recombinant protein (NP_940850) with a C-terminal MYC/DDK tag, was expressed in HEK293 cells.
Species	Human
Source	HEK293
Description	This gene encodes a member of the regenerating islet-derived genes (REG)3 protein family. These proteins are secreted, C-type lectins with a carbohydrate recognition domain and N-terminal signal peptide. The protein encoded by this gene is an antimicrobial lectin with activity against Gram-positive bacteria. Alternative splicing results in multiple transcript variants encoding multiple isoforms.
Molecular Mass	19.3 kDa
AA Sequence	MLPPMALPSVSWMLLSCLILLCQVQGEETQKELPSRISCPKGSKAYGSPCYALFLS PKSWMDADLACQKRPSGKLVSVLSGAEGSFVSSLVRSISNSYSYIWIGLHDPTQGS EPDGDGWEWSSTDVMNYFAWEKNPSTILNPGHCGSLSRSTGFLKWKDYNCDAKL PYVCKFKDTRTRPLEQKLISEEDLAANDILDYKDDDDKV
Purity	> 80% as determined by SDS-PAGE and Coomassie blue staining
Stability	Stable for 3 months from receipt of products under proper storage and handling conditions.

 Tel: 1-631-559-9269 1-516-512-3133

 Email: info@creative-biomart.com  Fax: 1-631-938-8127

 45-1 Ramsey Road, Shirley, NY 11967, USA

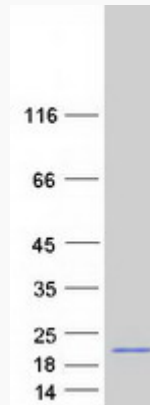
Storage	Store at -80 centigrade. Avoid repeated freeze-thaw cycles.
Concentration	50 µg/mL as determined by BCA
Storage Buffer	100 mM glycine, 25 mM Tris-HCl, pH 7.3.
GENE INFORMATION	
Gene Name	REG3G regenerating islet-derived 3 gamma [Homo sapiens (human)]
Official Symbol	REG3G
Synonyms	REG3G; regenerating islet-derived 3 gamma; regenerating islet-derived protein 3-gamma; LPPM429; PAP1B; UNQ429; PAP-1B; REG-3-gamma; reg III-gamma; regenerating gene III; pancreatitis-associated protein 1B; pancreatitis-associated protein 1B; regenerating islet-derived protein III-gamma; PAPIB; PAP IB; REG-III; MGC118998; MGC118999; MGC119001;
Gene ID	130120
mRNA Refseq	NM_198448
Protein Refseq	NP_940850
MIM	609933
UniProt ID	Q6UW15

 Tel: 1-631-559-9269 1-516-512-3133

 Email: info@creative-biomart.com  Fax: 1-631-938-8127

 45-1 Ramsey Road, Shirley, NY 11967, USA

SDS-PAGE



 Tel: 1-631-559-9269 1-516-512-3133

 Email: info@creative-biomart.com  Fax: 1-631-938-8127

 45-1 Ramsey Road, Shirley, NY 11967, USA