

Recombinant Human REG3G Protein (Glu27-Asp175), C-His tagged

Cat. No. REG3G-5633H Lot. No. (See product label)

SPECIFICATION

Product Overview	Recombinant human Reg3g (Glu27-Asp175) fused with the C-terminal His tag was expressed in mammalian cells.
Species	Human
Source	Mammalian Cells
ProteinLength	Glu27-Asp175
Form	Lyophilized powder/frozen liquid
Molecular Mass	16.17 kDa
Purity	> 90 % as determined by SDS-PAGE
Notes	For research use only.
Storage	Use a manual defrost freezer and avoid repeated freeze thaw cycles. Store at 2 to 8 centigrade for one week. Store at -20 to -80 centigrade for twelve months from the date of receipt.
Storage Buffer	Supplied as solution form in PBS or lyophilized from PBS.
Reconstitution	Reconstitute in sterile water for a stock solution.

 Tel: 1-631-559-9269 1-516-512-3133

 Email: info@creative-biomart.com  Fax: 1-631-938-8127

 45-1 Ramsey Road, Shirley, NY 11967, USA

Shipping They are shipped out with dry ice/blue ice unless customers require otherwise.

GENE INFORMATION

Gene Name REG3G regenerating islet-derived 3 gamma [Homo sapiens (human)]

Official Symbol REG3G

Synonyms REG3G; regenerating islet-derived 3 gamma; regenerating islet-derived protein 3-gamma; LPPM429; PAP1B; UNQ429; PAP-1B; REG-3-gamma; reg III-gamma; regenerating gene III; pancreatitis-associated protein 1B; pancreatitis-associated protein 1B; regenerating islet-derived protein III-gamma; PAPIB; PAP IB; REG-III; MGC118998; MGC118999; MGC119001;

Gene ID 130120

mRNA Refseq NM_001008387

Protein Refseq NP_001008388

MIM 609933

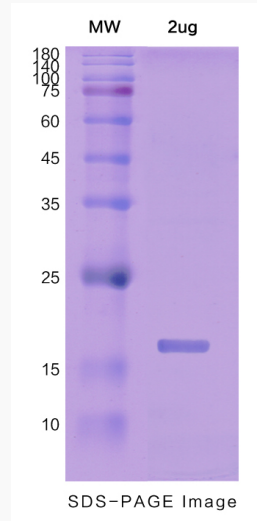
UniProt ID Q6UW15

 Tel: 1-631-559-9269 1-516-512-3133

 Email: info@creative-biomart.com  Fax: 1-631-938-8127

 45-1 Ramsey Road, Shirley, NY 11967, USA

SDS-PAGE



 Tel: 1-631-559-9269 1-516-512-3133

 Email: info@creative-biomart.com  Fax: 1-631-938-8127

 45-1 Ramsey Road, Shirley, NY 11967, USA