

## Recombinant Human REG3G Protein (Glu27-Asp175), N-His tagged

Cat. No. REG3G-5634H Lot. No. (See product label)

### SPECIFICATION

<b>Product Overview</b>	Recombinant human REG3G (Glu27-Asp175) fused with the N-His tag was expressed in E. coli.
<b>Species</b>	Human
<b>Source</b>	E.coli
<b>ProteinLength</b>	Glu27-Asp175
<b>Form</b>	Lyophilized powder/frozen liquid
<b>Molecular Mass</b>	18.81 kDa
<b>Purity</b>	> 90 % as determined by SDS-PAGE
<b>Notes</b>	For research use only.
<b>Storage</b>	Use a manual defrost freezer and avoid repeated freeze thaw cycles. Store at 2 to 8 centigrade for one week. Store at -20 to -80 centigrade for twelve months from the date of receipt.
<b>Storage Buffer</b>	0.01M PBS, pH 7.4, 0.02 % NLS
<b>Reconstitution</b>	Reconstitute in sterile water for a stock solution.

 Tel: 1-631-559-9269 1-516-512-3133

 Email: [info@creative-biomart.com](mailto:info@creative-biomart.com)  Fax: 1-631-938-8127

 45-1 Ramsey Road, Shirley, NY 11967, USA

**Shipping** They are shipped out with dry ice/blue ice unless customers require otherwise.

## GENE INFORMATION

**Gene Name** REG3G regenerating islet-derived 3 gamma [ Homo sapiens (human) ]

**Official Symbol** REG3G

**Synonyms** REG3G; regenerating islet-derived 3 gamma; regenerating islet-derived protein 3-gamma; LPPM429; PAP1B; UNQ429; PAP-1B; REG-3-gamma; reg III-gamma; regenerating gene III; pancreatitis-associated protein 1B; pancreatitis-associated protein 1B; regenerating islet-derived protein III-gamma; PAPIB; PAP IB; REG-III; MGC118998; MGC118999; MGC119001;

**Gene ID** 130120

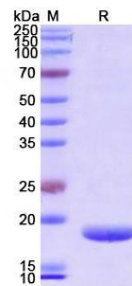
**mRNA Refseq** NM\_001008387

**Protein Refseq** NP\_001008388

**MIM** 609933

**UniProt ID** Q6UW15

### SDS-PAGE



 Tel: 1-631-559-9269 1-516-512-3133

 Email: [info@creative-biomart.com](mailto:info@creative-biomart.com)  Fax: 1-631-938-8127

 45-1 Ramsey Road, Shirley, NY 11967, USA