

Recombinant Human REG4 protein, His-tagged

Cat. No. REG4-2338H Lot. No. (See product label)

SPECIFICATION

Product Overview	Recombinant Human REG4 (Asp23-Pro158) protein was fused to His-tag at C-terminus and expressed in human 293 cells (HEK293).
Species	Human
Source	HEK293
ProteinLength	Asp23-Pro158
Description	Regenerating islet-derived protein 4 (REG4) is also known as Gastrointestinal secretory protein (GISP), REG-like protein (RELP). REG4 contains one C-type lectin domain. REG4 has calcium-independent lectin displaying mannose-binding specificity and able to maintain carbohydrate recognition activity in an acidic environment. REG4 may be involved in inflammatory and metaplastic responses of the gastrointestinal epithelium.
Predicted N Terminal	Asp23
Form	Lyophilized from 0.22 µm filtered solution in PBS, pH7.4, 10% trehalose.
Molecular Mass	The protein has a calculated MW of 16.7 kDa. The protein migrates as 18 kDa under reducing (R) condition (SDS-PAGE) due to glycosylation.
Endotoxin	Less than 1.0 EU per µg by the LAL method.

 Tel: 1-631-559-9269 1-516-512-3133

 Email: info@creative-biomart.com  Fax: 1-631-938-8127

 45-1 Ramsey Road, Shirley, NY 11967, USA

Purity	>95% as determined by SDS-PAGE.
Storage	<p>For long term storage, the product should be stored at lyophilized state at -20 centigrade or lower.</p> <p>Please avoid repeated freeze-thaw cycles.</p> <p>This product is stable after storage at:</p> <p>-20 to -70 centigrade for 12 months in lyophilized state;</p> <p>-70 centigrade for 3 months under sterile conditions after reconstitution.</p>
Reconstitution	It is recommended that sterile water be added to the vial to prepare a stock solution of 0.2 ug/ul. Centrifuge the vial at 4°C before opening to recover the entire contents.

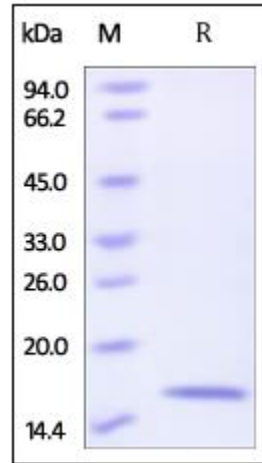
GENE INFORMATION

Gene Name	REG4
Official Symbol	REG4
Synonyms	REG4; regenerating islet-derived family, member 4; regenerating islet-derived protein 4; gastrointestinal secretory protein; GISP; REG IV; regenerating gene type IV; RELP; REG-4; reg IV; REG-like protein; regenerating islet-derived protein IV; REG-IV
Gene ID	83998
mRNA Refseq	NM_001159352
Protein Refseq	NP_001152824
MIM	609846
UniProt ID	Q9BYZ8

 Tel: 1-631-559-9269 1-516-512-3133

 Email: info@creative-biomart.com  Fax: 1-631-938-8127

 45-1 Ramsey Road, Shirley, NY 11967, USA

**SDS-PAGE of REG4-
2338H**

Human Reg4, His Tag on SDS-PAGE under reducing (R) condition. The gel was stained overnight with Coomassie Blue. The purity of the protein is greater than 95%.

Tel: 1-631-559-9269 1-516-512-3133

Email: info@creative-biomart.com Fax: 1-631-938-8127

45-1 Ramsey Road, Shirley, NY 11967, USA