

## Active Recombinant Human REG4 protein, His-tagged

Cat. No. REG4-426H Lot. No. (See product label)

### SPECIFICATION

<b>Product Overview</b>	Active Recombinant Human REG4 protein(NP_001152824.1) (Met 1-Pro 158) was expressed in HEK293, with a polyhistidine tag at the C-terminus.
<b>Species</b>	Human
<b>Source</b>	HEK293
<b>ProteinLength</b>	1-158 aa
<b>Form</b>	Lyophilized from sterile PBS, pH 7.4.
<b>Bio-activity</b>	Measured by the ability of the immobilized protein to support the proliferation of HCT-116 human colorectal carcinoma cells (CCL-247) under low serum conditions. The ED50 for this effect is typically 4-20 µg/ml.
<b>Molecular Mass</b>	The recombinant human REG4 consists of 147 amino acids and predicts a molecular mass of 17.4 kDa. In SDS-PAGE under reducing conditions, the apparent molecular mass of rh REG4 is approximately 18 and 22 kDa due to different glycosylation.
<b>Endotoxin</b>	< 1.0 EU per µg of the protein as determined by the LAL method.
<b>Purity</b>	> 95 % as determined by SDS-PAGE
<b>Storage</b>	Store it under sterile conditions at -20°C to -80°C upon receiving. Recommend to

 Tel: 1-631-559-9269 1-516-512-3133

 Email: [info@creative-biomart.com](mailto:info@creative-biomart.com)  Fax: 1-631-938-8127

 45-1 Ramsey Road, Shirley, NY 11967, USA

aliquot the protein into smaller quantities for optimal storage. Avoid repeated freeze-thaw cycles.

**Reconstitution**

It is recommended that sterile water be added to the vial to prepare a stock solution of 0.2 ug/ul. Centrifuge the vial at 4°C before opening to recover the entire contents.

**protein Refseq-Weblink**

[http://www.ncbi.nlm.nih.gov/protein/NP\\_001152824.1](http://www.ncbi.nlm.nih.gov/protein/NP_001152824.1)

**Unit ID**

Q9BYZ8

**Unit ID-Weblink**

<https://www.uniprot.org/uniprotkb/Q9BYZ8>

## GENE INFORMATION

**Gene Name**

REG4 regenerating islet-derived family, member 4 [ Homo sapiens ]

**Official Symbol**

REG4

**Synonyms**

REG4; regenerating islet-derived family, member 4; regenerating islet-derived protein 4; gastrointestinal secretory protein; GISP; REG IV; regenerating gene type IV; RELP; REG-4; reg IV; REG-like protein; regenerating islet-derived protein IV; REG-IV;

**Gene ID**

83998

**mRNA Refseq**

NM\_001159352

**protein Refseq**

NP\_001152824

**MIM**

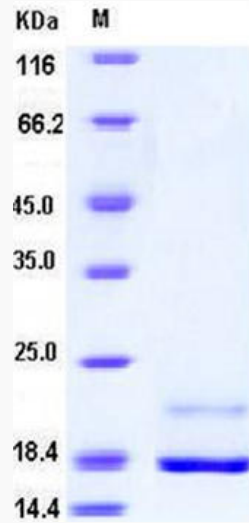
609846

 Tel: 1-631-559-9269 1-516-512-3133

 Email: [info@creative-biomart.com](mailto:info@creative-biomart.com)  Fax: 1-631-938-8127

 45-1 Ramsey Road, Shirley, NY 11967, USA

SDS-PAGE



 Tel: 1-631-559-9269 1-516-512-3133

 Email: [info@creative-biomart.com](mailto:info@creative-biomart.com)  Fax: 1-631-938-8127

 45-1 Ramsey Road, Shirley, NY 11967, USA