

Recombinant Human REG4 Protein (Asp23-Pro158), C-His tagged

Cat. No. REG4-6623H Lot. No. (See product label)

SPECIFICATION

Product Overview	Recombinant human REG4 (Asp23-Pro158) fused with the C-terminal His tag was expressed in mammalian cells.
Species	Human
Source	Mammalian Cells
ProteinLength	Asp23-Pro158
Form	Lyophilized powder/frozen liquid
Molecular Mass	14.96 kDa
Purity	> 90 % as determined by SDS-PAGE
Notes	For research use only.
Storage	Use a manual defrost freezer and avoid repeated freeze thaw cycles. Store at 2 to 8 centigrade for one week. Store at -20 to -80 centigrade for twelve months from the date of receipt.
Storage Buffer	Supplied as solution form in PBS or lyophilized from PBS.
Reconstitution	Reconstitute in sterile water for a stock solution.

 Tel: 1-631-559-9269 1-516-512-3133

 Email: info@creative-biomart.com  Fax: 1-631-938-8127

 45-1 Ramsey Road, Shirley, NY 11967, USA

Shipping They are shipped out with dry ice/blue ice unless customers require otherwise.

GENE INFORMATION

Gene Name REG4 regenerating islet-derived family, member 4 [Homo sapiens (human)]

Official Symbol REG4

Synonyms REG4; regenerating islet-derived family, member 4; regenerating islet-derived protein 4; gastrointestinal secretory protein; GISP; REG IV; regenerating gene type IV; RELP; REG-4; reg IV; REG-like protein; regenerating islet-derived protein IV; REG-IV;

Gene ID 83998

mRNA Refseq NM_001159352

Protein Refseq NP_001152824

MIM 609846

UniProt ID Q9BYZ8

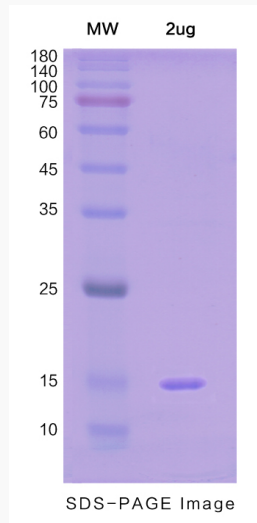
 Tel: 1-631-559-9269 1-516-512-3133

 Email: info@creative-biomart.com  Fax: 1-631-938-8127

 45-1 Ramsey Road, Shirley, NY 11967, USA



SDS-PAGE



Tel: 1-631-559-9269 1-516-512-3133

Email: info@creative-biomart.com Fax: 1-631-938-8127

45-1 Ramsey Road, Shirley, NY 11967, USA