

## Recombinant Human REG4 Protein (Ser29-Thr140), N-His tagged

Cat. No. REG4-6624H Lot. No. (See product label)

### SPECIFICATION

<b>Product Overview</b>	Recombinant human REG4 (Ser29-Thr140) fused with the N-His tag was expressed in E. coli.
<b>Species</b>	Human
<b>Source</b>	E.coli
<b>ProteinLength</b>	Ser29-Thr140
<b>Form</b>	Lyophilized powder/frozen liquid
<b>Molecular Mass</b>	15.22 kDa
<b>Purity</b>	> 90 % as determined by SDS-PAGE
<b>Notes</b>	For research use only.
<b>Storage</b>	Use a manual defrost freezer and avoid repeated freeze thaw cycles. Store at 2 to 8 centigrade for one week. Store at -20 to -80 centigrade for twelve months from the date of receipt.
<b>Storage Buffer</b>	0.01M PBS, pH 7.4, 0.02 % NLS
<b>Reconstitution</b>	Reconstitute in sterile water for a stock solution.

 Tel: 1-631-559-9269 1-516-512-3133

 Email: [info@creative-biomart.com](mailto:info@creative-biomart.com)  Fax: 1-631-938-8127

 45-1 Ramsey Road, Shirley, NY 11967, USA

**Shipping**

They are shipped out with dry ice/blue ice unless customers require otherwise.

**GENE INFORMATION**
**Gene Name**

REG4 regenerating islet-derived family, member 4 [ Homo sapiens (human) ]

**Official Symbol**

REG4

**Synonyms**

REG4; regenerating islet-derived family, member 4; regenerating islet-derived protein 4; gastrointestinal secretory protein; GISP; REG IV; regenerating gene type IV; RELP; REG-4; reg IV; REG-like protein; regenerating islet-derived protein IV; REG-IV;

**Gene ID**

83998

**mRNA Refseq**

NM\_001159352

**Protein Refseq**

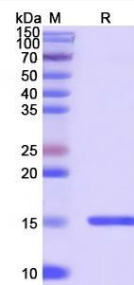
NP\_001152824

**MIM**

609846

**UniProt ID**

Q9BYZ8

**SDS-PAGE**


 Tel: 1-631-559-9269 1-516-512-3133

 Email: [info@creative-biomart.com](mailto:info@creative-biomart.com)  Fax: 1-631-938-8127

 45-1 Ramsey Road, Shirley, NY 11967, USA