

## Recombinant Human REL protein, His-tagged

Cat. No. REL-5508H Lot. No. (See product label)

### SPECIFICATION

<b>Product Overview</b>	Recombinant Human REL protein(Q04864)(3-616aa), fused to N-terminal His tag, was expressed in Yeast.
<b>Species</b>	Human
<b>Source</b>	Yeast
<b>ProteinLength</b>	3-616aa
<b>Form</b>	If the delivery form is liquid, the default storage buffer is Tris/PBS-based buffer, 5%-50% glycerol. If the delivery form is lyophilized powder, the buffer before lyophilization is Tris/PBS-based buffer, 6% Trehalose, pH 8.0.
<b>Molecular Mass</b>	66.6 kDa
<b>Purity</b>	Greater than 85% as determined by SDS-PAGE.
<b>Storage</b>	Store at -20°C/-80°C upon receipt, aliquoting is necessary for mutiple use. Avoid repeated freeze-thaw cycles.
<b>Reconstitution</b>	Please reconstitute protein in deionized sterile water to a concentration of 0.1-1.0 mg/mL. We recommend to add 5-50% of glycerol (final concentration) and aliquot for long-term storage at -20°C/-80°C. Our default final concentration of glycerol is 50%.

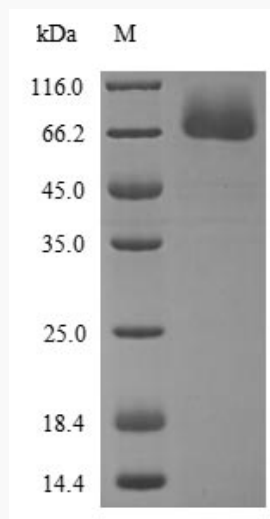
### GENE INFORMATION

 Tel: 1-631-559-9269 1-516-512-3133

 Email: [info@creative-biomart.com](mailto:info@creative-biomart.com)  Fax: 1-631-938-8127

 45-1 Ramsey Road, Shirley, NY 11967, USA

<b>Gene Name</b>	REL v-rel reticuloendotheliosis viral oncogene homolog (avian) [ Homo sapiens ]
<b>Official Symbol</b>	REL
<b>Synonyms</b>	REL; v-rel reticuloendotheliosis viral oncogene homolog (avian); v rel avian reticuloendotheliosis viral oncogene homolog; proto-oncogene c-Rel; c Rel; I Rel; C-Rel proto-oncogene protein; oncogene REL, avian reticuloendotheliosis; v-rel avian reticuloendotheliosis viral oncogene homolog; C-Rel;
<b>Gene ID</b>	5966
<b>mRNA Refseq</b>	NM_002908
<b>Protein Refseq</b>	NP_002899
<b>MIM</b>	164910
<b>UniProt ID</b>	Q04864

**SDS-PAGE**


Tel: 1-631-559-9269 1-516-512-3133

Email: [info@creative-biomart.com](mailto:info@creative-biomart.com) Fax: 1-631-938-8127

45-1 Ramsey Road, Shirley, NY 11967, USA