

# Recombinant Human RELA Protein, Myc/DDK-tagged, C13 and N15-labeled

**Cat. No.** RELA-2484H    **Lot. No.** (See product label)

## SPECIFICATION

<b>Product Overview</b>	RELA MS Standard C13 and N15-labeled recombinant protein (NP_068810) with a C-terminal MYC/DDK tag, was expressed in HEK293 cells.
<b>Species</b>	Human
<b>Source</b>	HEK293
<b>Description</b>	NF-kappa-B is a ubiquitous transcription factor involved in several biological processes. It is held in the cytoplasm in an inactive state by specific inhibitors. Upon degradation of the inhibitor, NF-kappa-B moves to the nucleus and activates transcription of specific genes. NF-kappa-B is composed of NFKB1 or NFKB2 bound to either REL, RELA, or RELB. The most abundant form of NF-kappa-B is NFKB1 complexed with the product of this gene, RELA. Four transcript variants encoding different isoforms have been found for this gene.
<b>Molecular Mass</b>	60 kDa
<b>AA Sequence</b>	MDELFPFLIFPAEPAQASGPYVEIIEQPKQRGMFRYKCEGRSAGSIPGERSTDTTKT HPTIKINGYTGPGTVRISLVTKDPPHRPHHELVGKDCRDGFYEALCPDRCIHSFQ NLGIQCVKKRDLEQAISQRIQTNNNPFQVPIEEQRGDYDLNAVRLCFQVTVRDPSGR PLRLPPVLSHPFDNRAPNTAELKICRVNRNSGSLGGDEIFLLCDKVQKEDIEVYFT GPGWEARGSFSQADVHRQVAIVFRTPPYADPSLQAPVRVSMQLRRPSDRELSEPM EFQYLPDTPDDRHRIEEKRKRTYETFKSIMKKSPFSGPTDPRPPPRRIAVPSRSSASV

 Tel: 1-631-559-9269    1-516-512-3133

 Email: [info@creative-biomart.com](mailto:info@creative-biomart.com)     Fax: 1-631-938-8127

 45-1 Ramsey Road, Shirley, NY 11967, USA

PKPAPQPYPFTSSLSTINYDEFPTMVFPSPGQISQASALAPAPPQVLPQAPAPAPAPA  
 MVSALAQAPAPVPVLAPGPPQAVAPPAPKPTQAGEGTLSEALLQLQFDDEDLGALL  
 GNSTDPAVFTDLASVDNSEFQQLLNQGIPVAPHTTEPMLMEYPEAITRLVTGAQRPP  
 DPAPAPLGAPGLPNGLLSGDEDFSSIADMDFSALLSQISSTRTRPLEQKLISEEDLAA  
 NDILDYKDDDDKV

**Purity** > 80% as determined by SDS-PAGE and Coomassie blue staining

**Stability** Stable for 3 months from receipt of products under proper storage and handling conditions.

**Storage** Store at -80 centigrade. Avoid repeated freeze-thaw cycles.

**Concentration** 50 µg/mL as determined by BCA

**Storage Buffer** 100 mM glycine, 25 mM Tris-HCl, pH 7.3.

## GENE INFORMATION

**Gene Name** [RELA](#) [RELA proto-oncogene, NF-kB subunit \[ Homo sapiens \(human\) \]](#)

**Official Symbol** [RELA](#)

**Synonyms** [RELA](#); [v-rel reticuloendotheliosis viral oncogene homolog A \(avian\)](#); [NFKB3](#), nuclear factor of kappa light polypeptide gene enhancer in B cells 3; [transcription factor p65](#); [p65](#); [NF-kappa-B p65delta3](#); [nuclear factor NF-kappa-B p65 subunit](#); [nuclear factor of kappa light polypeptide gene enhancer in B-cells 3](#); [NFKB3](#); [MGC131774](#);

**Gene ID** [5970](#)

**mRNA Refseq** [NM\\_021975](#)

 Tel: 1-631-559-9269 1-516-512-3133

 Email: [info@creative-biomart.com](mailto:info@creative-biomart.com)  Fax: 1-631-938-8127

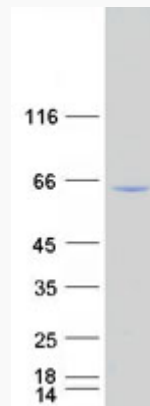
 45-1 Ramsey Road, Shirley, NY 11967, USA

**Protein Refseq**      NP\_068810

**MIM**                    164014

**UniProt ID**            Q04206

**SDS-PAGE**



 Tel: 1-631-559-9269    1-516-512-3133

 Email: [info@creative-biomart.com](mailto:info@creative-biomart.com)     Fax: 1-631-938-8127

 45-1 Ramsey Road, Shirley, NY 11967, USA