

Recombinant Human RELA protein, His-tagged

Cat. No. RELA-3525H **Lot. No.** (See product label)

SPECIFICATION

Product Overview	Recombinant Human RELA protein(Q04206)(1-210aa), fused with N-terminal His tag, was expressed in E.coli.
Species	Human
Source	E.coli
ProteinLength	1-210aa
Form	If the delivery form is liquid, the default storage buffer is Tris/PBS-based buffer, 5%-50% glycerol. If the delivery form is lyophilized powder, the buffer before lyophilization is Tris/PBS-based buffer, 6% Trehalose, pH 8.0.
Molecular Mass	27.7 kDa
Purity	Greater than 90% as determined by SDS-PAGE.
Storage	Store at -20°C/-80°C upon receipt, aliquoting is necessary for mutiple use. Avoid repeated freeze-thaw cycles.
Reconstitution	We recommend that this vial be briefly centrifuged prior to opening to bring the contents to the bottom. Please reconstitute protein in deionized sterile water to a concentration of 0.1-1.0 mg/mL. We recommend to add 5-50% of glycerol (final concentration) and aliquot for long-term storage at -20°C/-80°C.

 Tel: 1-631-559-9269 1-516-512-3133

 Email: info@creative-biomart.com  Fax: 1-631-938-8127

 45-1 Ramsey Road, Shirley, NY 11967, USA

AA Sequence

MDELFP LIFPAEPAQASGPYVEIIEQPKQRGMRF RYKCEGRSAGSIPGERSTDTTKT
 HPTIKINGYTGP GTVRISLVTKDPPHRPH PHELVGKDCRDGFYEALCPDRCIHSFQ
 NLGIQCVKKRDLEQAISQRIQTNNNPFQVPIEEQRGDYDLNAVRLCFQVTVRDPSSGR
 PLRLPPVLSHPIFDNRAPNTAELKICRVN RNSGSLGGD

GENE INFORMATION

Gene Name [RELA v-rel reticuloendotheliosis viral oncogene homolog A \(avian\) \[Homo sapiens \]](#)

Official Symbol [RELA](#)

Synonyms

RELA; v-rel reticuloendotheliosis viral oncogene homolog A (avian); NFKB3, nuclear factor of kappa light polypeptide gene enhancer in B cells 3; transcription factor p65; p65; NF-kappa-B p65delta3; nuclear factor NF-kappa-B p65 subunit; nuclear factor of kappa light polypeptide gene enhancer in B-cells 3; NFKB3; MGC131774;

Gene ID [5970](#)

mRNA Refseq [NM_001145138](#)

Protein Refseq [NP_001138610](#)

MIM [164014](#)

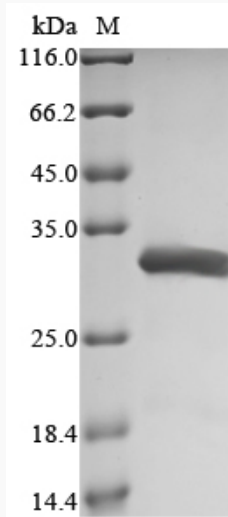
UniProt ID [Q04206](#)

 Tel: 1-631-559-9269 1-516-512-3133

 Email: info@creative-biomart.com  Fax: 1-631-938-8127

 45-1 Ramsey Road, Shirley, NY 11967, USA

SDS-PAGE



 Tel: 1-631-559-9269 1-516-512-3133

 Email: info@creative-biomart.com  Fax: 1-631-938-8127

 45-1 Ramsey Road, Shirley, NY 11967, USA