

Recombinant Human RELA Protein, GST-tagged

Cat. No. RELA-729H **Lot. No.** (See product label)

SPECIFICATION

Product Overview	Recombinant Human RELA Protein(NP_001138610)(1-220 aa), fused to GST tag, was expressed in E. coli.
Species	Human
Source	E.coli
ProteinLength	1-220 aa
Form	The purified protein was Lyophilized from sterile PBS (58mM Na ₂ HPO ₄ , 17mM NaH ₂ PO ₄ , 68mM NaCl, pH8.). 5 % trehalose and 5 % mannitol are added as protectants before lyophilization.
AA Sequence	MDELFLIFPAEPAQASGPYVEIIEQPKQRGMRFYKCEGRSAGSIPGERSTDTTKT HPTIKINGYTGPGTVRISLVTKDPPHRPHHELVGKDCRDGFYEALCPDRCIHSFQ NLGIQCVKKRDLEQAISQRIQTNNNPFQVPIEEQRGDYDLNAVRLCFQVTVRDPSGR PLRLPPVLSHPFDNRAPNTAELKICRVNRNSGSLGGDEIFLLCDKVQ
Purity	90%, by SDS-PAGE with Coomassie Brilliant Blue staining.
Storage	Short-term storage: Store at 2-8°C for (1-2 weeks). Long-term storage: Aliquot and store at -20°C to -80°C for up to 3 months, buffer containing 50% glycerol is recommended for reconstitution. Avoid repeat freeze-thaw cycles.

 Tel: 1-631-559-9269 1-516-512-3133

 Email: info@creative-biomart.com  Fax: 1-631-938-8127

 45-1 Ramsey Road, Shirley, NY 11967, USA

Reconstitution

Reconstitute at 0.25 g/μl in 200 μl sterile water for short-term storage.
 Reconstitution with 200 μl 50% glycerol solution is recommended for longer term storage (see Stability and Storage for more details).
 If a different concentration is needed for your purposes please adjust the reconstitution volume as required (please note: the ion concentration of the final solution will vary according to the volume used).
 Note: Centrifuge vial before opening. When reconstituting, gently pipet and wash down the sides of the vial to ensure full recovery of the protein into solution.

GENE INFORMATION

Gene Name	RELA v-rel reticuloendotheliosis viral oncogene homolog A (avian) [Homo sapiens]
Official Symbol	RELA
Synonyms	RELA; transcription factor p65; p65; NF-kappa-B p65delta3; nuclear factor NF-kappa-B p65 subunit; NFKB3; MGC131774;
Gene ID	5970
mRNA Refseq	NM_001145138
Protein Refseq	NP_001138610
MIM	164014
UniProt ID	Q04206

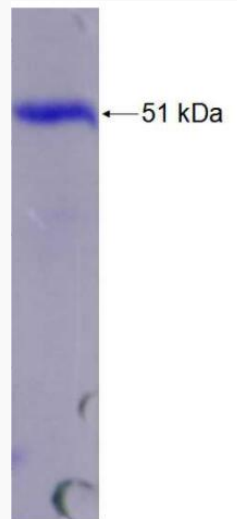
 Tel: 1-631-559-9269 1-516-512-3133

 Email: info@creative-biomart.com  Fax: 1-631-938-8127

 45-1 Ramsey Road, Shirley, NY 11967, USA



SDS-PAGE



Tel: 1-631-559-9269 1-516-512-3133

Email: info@creative-biomart.com Fax: 1-631-938-8127

45-1 Ramsey Road, Shirley, NY 11967, USA