

# Recombinant Escherichia coli RELB Protein (1-79 aa), His-Myc-tagged

**Cat. No.** RELB-2561E    **Lot. No.** (See product label)

## SPECIFICATION

<b>Product Overview</b>	Recombinant Escherichia coli (strain K12) RELB Protein (1-79 aa) is produced by E. coli expression system. This protein is fused with a 10xHis tag at the N-terminal and a Myc tag at the C-terminal. Protein Description: Full Length.
<b>Species</b>	E.coli
<b>Source</b>	E.coli
<b>ProteinLength</b>	1-79 aa
<b>Description</b>	Antitoxin component of a type II toxin-antitoxin (TA) system. Counteracts the effect of cognate toxin RelE via direct protein-protein interaction, preventing RelE from entering the ribosome A site and thus inhibiting its endoribonuclease activity. An autorepressor of relBE operon transcription. 2 RelB dimers bind to 2 operator sequences; DNA-binding and repression is stronger when complexed with toxin/corepressor RelE by conditional cooperativity. Increased transcription rate of relBE and activation of relE is consistent with a lower level of RelB in starved cells due to degradation of RelB by protease Lon.
<b>Form</b>	Tris-based buffer,50% glycerol
<b>Molecular Mass</b>	16.1 kDa
<b>AA Sequence</b>	MGSINLRIDDELKARSYAALEKMGVTPSEALRLMLEYIADNERLPFKQTLLSDEDAEL

 Tel: 1-631-559-9269    1-516-512-3133

 Email: [info@creative-biomart.com](mailto:info@creative-biomart.com)     Fax: 1-631-938-8127

 45-1 Ramsey Road, Shirley, NY 11967, USA

	VEIVKERLRNPKPVRVTLDEL
<b>Purity</b>	> 90% as determined by SDS-PAGE.
<b>Notes</b>	Repeated freezing and thawing is not recommended. Store working aliquots at 4 centigrade for up to one week.
<b>Storage</b>	The shelf life is related to many factors, storage state, buffer ingredients, storage temperature and the stability of the protein itself. Generally, the shelf life of liquid form is 6 months at -20 centigrade/-80 centigrade. The shelf life of lyophilized form is 12 months at -20 centigrade/-80 centigrade.
<b>Concentration</b>	A hardcopy of COA will be sent along with the products. Please refer to it for detailed information.

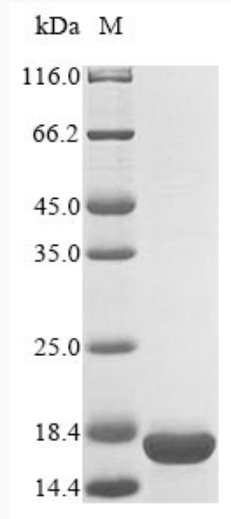
## GENE INFORMATION

<b>Gene Name</b>	relB Qin prophage; antitoxin/DNA-binding transcriptional repressor RelB [ Escherichia coli str. K-12 substr. MG1655 ]
<b>Official Symbol</b>	RELB
<b>Synonyms</b>	relB; ECK1558; RC;
<b>Gene ID</b>	948308
<b>Protein Refseq</b>	NP_416082
<b>UniProt ID</b>	P0C079

 Tel: 1-631-559-9269 1-516-512-3133

 Email: [info@creative-biomart.com](mailto:info@creative-biomart.com)  Fax: 1-631-938-8127

 45-1 Ramsey Road, Shirley, NY 11967, USA



(Tris-Glycine gel) Discontinuous SDS-PAGE (reduced) with 5% enrichment gel and 15% separation gel.

 Tel: 1-631-559-9269 1-516-512-3133

 Email: [info@creative-biomart.com](mailto:info@creative-biomart.com)  Fax: 1-631-938-8127

 45-1 Ramsey Road, Shirley, NY 11967, USA