

Recombinant Human RELB Protein, Myc/DDK-tagged, C13 and N15-labeled

Cat. No. RELB-5320H **Lot. No.** (See product label)

SPECIFICATION

Product Overview	RELB MS Standard C13 and N15-labeled recombinant protein (NP_006500) with a C-terminal MYC/DDK tag, was expressed in HEK293 cells.
Species	Human
Source	HEK293
Description	RELB (RELB Proto-Oncogene, NF-KB Subunit) is a Protein Coding gene. Diseases associated with RELB include Immunodeficiency 53 and Rheumatoid Arthritis. Among its related pathways are GDNF-Family Ligands and Receptor Interactions and Immune response IL-23 signaling pathway. Gene Ontology (GO) annotations related to this gene include DNA-binding transcription factor activity and transcription corepressor activity. An important paralog of this gene is RELA.
Molecular Mass	62 kDa
AA Sequence	MLRSGPASGPSVPTGRAMPSRRVARPPAAPELGALGSPDLSSLSLAVSRSTDELEII DEYIKENGFGLDGGQPGPGEGLPRLVSRGAASLSTVTLGPVAPPATPPPWGCPGLG RLVSPAPGPGPQPHLVITEQPKQRGMFRYECGRSAGSILGESSTEASKTLPALIEL RDCGGLREVEVTAACLWWDWPHRVHPHSLVKGKCTDGICRVLRPHVSPRHSFNN LGIQCVRKKEIEAAIERKIQLGIDPYNAGSLKNHQEVDMMNVVVICFQASYRDQQGQM RRMDPVLSEPVYDKKSTNTSELRICRINKESGPCTGGEELYLLCDKVQKEDISVVFS RASWEGRADFSQADVHRQIAIVFKTPPYEDLEIVEPVTVNVFLQRLTDGVCSEPLPF

 Tel: 1-631-559-9269 1-516-512-3133

 Email: info@creative-biomart.com  Fax: 1-631-938-8127

 45-1 Ramsey Road, Shirley, NY 11967, USA

TYLPRDHDSYGVDKKRKRGMPPDVLGELNSSDPHGIESKRRKKKPAILDHFLPNHGS
 GPFLPPSALLPDPDFFSGTVSLPGLEPPGGPDLDDGFAYDPTAPTFTMLDLLPPA
 PPHASAVVCSGGAGAVVGETPGPEPLTLDYQAPGPGDGGTASLVGSNMFPNHYR
 EAAFGGGLLSPGPEATTRTRPLEQKLISEEDLAANDILDYKDDDDKV

Purity > 80% as determined by SDS-PAGE and Coomassie blue staining

Stability Stable for 3 months from receipt of products under proper storage and handling conditions.

Storage Store at -80 centigrade. Avoid repeated freeze-thaw cycles.

Concentration 50 µg/mL as determined by BCA

Storage Buffer 100 mM glycine, 25 mM Tris-HCl, pH 7.3.

GENE INFORMATION

Gene Name RELB v-rel reticuloendotheliosis viral oncogene homolog B [Homo sapiens (human)]

Official Symbol RELB

Synonyms RELB; v-rel reticuloendotheliosis viral oncogene homolog B; v rel avian reticuloendotheliosis viral oncogene homolog B (nuclear factor of kappa light polypeptide gene enhancer in B cells 3); transcription factor RelB; REL B; v-rel reticuloendotheliosis viral oncogene homolog B, nuclear factor of kappa light polypeptide gene enhancer in B-cells 3; v-rel avian reticuloendotheliosis viral oncogene homolog B (nuclear factor of kappa light polypeptide gene enhancer in B-cells 3); IREL; I-REL; REL-B;

Gene ID 5971

 Tel: 1-631-559-9269 1-516-512-3133

 Email: info@creative-biomart.com  Fax: 1-631-938-8127

 45-1 Ramsey Road, Shirley, NY 11967, USA

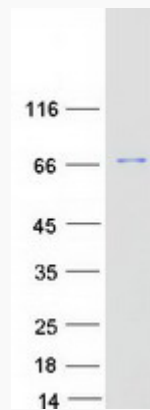
mRNA Refseq [NM_006509](#)

Protein Refseq [NP_006500](#)

MIM [604758](#)

UniProt ID [Q01201](#)

SDS-PAGE



 Tel: 1-631-559-9269 1-516-512-3133

 Email: info@creative-biomart.com  Fax: 1-631-938-8127

 45-1 Ramsey Road, Shirley, NY 11967, USA