

Recombinant Full Length Human RELB Protein, Myc/DDK-tagged

Cat. No. RELB-5321H **Lot. No.** (See product label)

SPECIFICATION

Product Overview	Recombinant protein of human v-rel reticuloendotheliosis viral oncogene homolog B (RELB) with a C-Myc/DDK tag was expressed in HEK293T.
Species	Human
Source	HEK293
ProteinLength	1-579 a.a.
Description	Enables RNA polymerase II cis-regulatory region sequence-specific DNA binding activity and protein kinase binding activity. Involved in lymphocyte differentiation and negative regulation of interferon-beta production. Located in cytosol and nucleoplasm. Part of chromatin; nucleus; and transcription repressor complex. Colocalizes with centrosome. Implicated in breast cancer and immunodeficiency 53. Biomarker of breast cancer and transitional cell carcinoma.
Molecular Mass	62 kDa
AA Sequence	MLRSGPASGPSVPTGRAMPSRRVARPPAAPPELGALGSPDLSSLSLAVSRSTDELEII DEYIKENGFGLDGGQPGPGEGLPRLVSRGAASLSTVTLGPVAPPATPPPWGCPLG RLVSPAPGPGPQPHLVITEQPKQRGMRFRYECEGRSAGSILGESSTEASKTLPALIEL RDCGGLREVEVTAACLWWDWPHRVHPHSLVVGKDCTDGCIRVRLRPHVSPRHSFNN LGIQCVRKKEIEAAIERKIQLGIDPYNAGSLKNHQEVDMMNVVVICFQASYRDQQGQM RRMDPVLSEPVYDKKSTNTSELRICRINKESGPCTGGEELYLLCDKVKQKEDISVVS

 Tel: 1-631-559-9269 1-516-512-3133

 Email: info@creative-biomart.com  Fax: 1-631-938-8127

 45-1 Ramsey Road, Shirley, NY 11967, USA

RASWEGRADFSQADVHRQIAIVFKTPPYEDLEIVEPVTVNVFLQRLTDGVCSEPLPF
 TYLPRDHDSYGVDKRRKRGMPDVLGELNSSDPHGIESKRRKKKPAILDHFLPNHGS
 GPFLPPSALLPDPDFFSGTVSLPGLEPPGGPDLLDDGFAYDPTAPTFTMLDLLPPA
 PPHASAVVCSGGAGAVVGETPGPEPLTLDYSYQAPGPGDGGTASLVGSNMFPNHYR
 EAAFGGGLLSPGPEAT

Purity > 80% as determined by SDS-PAGE and Coomassie blue staining

Stability Stable for 12 months from the date of receipt of the product under proper storage and handling conditions. Avoid repeated freeze-thaw cycles.

Storage Store at -80 centigrade.

Concentration >50 µg/mL as determined by microplate BCA method

Storage Buffer 25 mM Tris.HCl, pH 7.3, 100 mM glycine, 10% glycerol

GENE INFORMATION

Gene Name RELB RELB proto-oncogene, NF-kB subunit [Homo sapiens (human)]

Official Symbol RELB RELB proto-oncogene, NF-kB subunit [Homo sapiens (human)]

Synonyms RELB; RELB proto-oncogene, NF-kB subunit; IREL; I-REL; IMD53; REL-B; transcription factor RelB; v-rel avian reticuloendotheliosis viral oncogene homolog B (nuclear factor of kappa light polypeptide gene enhancer in B-cells 3); v-rel reticuloendotheliosis viral oncogene homolog B, nuclear factor of kappa light polypeptide gene enhancer in B-cells 3

Gene ID 5971

 Tel: 1-631-559-9269 1-516-512-3133

 Email: info@creative-biomart.com  Fax: 1-631-938-8127

 45-1 Ramsey Road, Shirley, NY 11967, USA

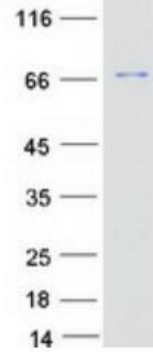
mRNA Refseq [NM_006509](#)

Protein Refseq [NP_006500](#)

MIM [604758](#)

UniProt ID [Q01201](#)

SDS-PAGE



Coomassie blue staining of purified RELB protein. The protein was produced from HEK293T cells transfected with RELB cDNA clone using MegaTran 2.0.

 Tel: 1-631-559-9269 1-516-512-3133

 Email: info@creative-biomart.com  Fax: 1-631-938-8127

 45-1 Ramsey Road, Shirley, NY 11967, USA