

Recombinant Human RELB Protein (Asp248-Asp492), N-His tagged

Cat. No. RELB-6167H Lot. No. (See product label)

SPECIFICATION

Product Overview	Recombinant human RELB (Asp248-Asp492) fused with the N-His tag was expressed in E. coli.
Species	Human
Source	E.coli
ProteinLength	Asp248-Asp492
Form	Lyophilized powder/frozen liquid
Molecular Mass	29.74 kDa
Purity	> 90 % as determined by SDS-PAGE
Notes	For research use only.
Storage	Use a manual defrost freezer and avoid repeated freeze thaw cycles. Store at 2 to 8 centigrade for one week. Store at -20 to -80 centigrade for twelve months from the date of receipt.
Storage Buffer	0.01M PBS, pH 7.4, 0.02 % NLS
Reconstitution	Reconstitute in sterile water for a stock solution.

 Tel: 1-631-559-9269 1-516-512-3133

 Email: info@creative-biomart.com  Fax: 1-631-938-8127

 45-1 Ramsey Road, Shirley, NY 11967, USA

Shipping

They are shipped out with dry ice/blue ice unless customers require otherwise.

GENE INFORMATION
Gene Name

RELB v-rel reticuloendotheliosis viral oncogene homolog B [Homo sapiens (human)]

Official Symbol

RELB

Synonyms

RELB; v-rel reticuloendotheliosis viral oncogene homolog B; v rel avian reticuloendotheliosis viral oncogene homolog B (nuclear factor of kappa light polypeptide gene enhancer in B cells 3); transcription factor RelB; REL B; v-rel reticuloendotheliosis viral oncogene homolog B, nuclear factor of kappa light polypeptide gene enhancer in B-cells 3; v-rel avian reticuloendotheliosis viral oncogene homolog B (nuclear factor of kappa light polypeptide gene enhancer in B-cells 3); IREL; I-REL; REL-B;

Gene ID

5971

mRNA Refseq

NM_006509

Protein Refseq

NP_006500

MIM


604758

UniProt ID

Q01201

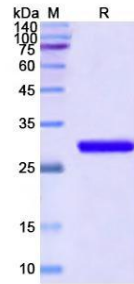
 Tel: 1-631-559-9269 1-516-512-3133

 Email: info@creative-biomart.com  Fax: 1-631-938-8127

 45-1 Ramsey Road, Shirley, NY 11967, USA



SDS-PAGE



Tel: 1-631-559-9269 1-516-512-3133

Email: info@creative-biomart.com Fax: 1-631-938-8127

45-1 Ramsey Road, Shirley, NY 11967, USA