

## Recombinant Human RELT Protein (26-153 aa), His-tagged

Cat. No. RELT-1219H Lot. No. (See product label)

### SPECIFICATION

<b>Product Overview</b>	Recombinant Human RELT Protein (26-153 aa) is produced by E. coli expression system. This protein is fused with a 6xHis tag at the N-terminal. Research Area: Signal Transduction. Protein Description: Partial.
<b>Species</b>	Human
<b>Source</b>	E.coli
<b>ProteinLength</b>	26-153 aa
<b>Description</b>	Mediates activation of NF-kappa-B. May play a role in T-cell activation.
<b>Form</b>	Tris-based buffer,50% glycerol
<b>Molecular Mass</b>	17.7 kDa
<b>AA Sequence</b>	STTLWQCPPGEEPDLDPGQGTLCRPCPPGTFSAAWGSSPCQPHARCSLWRRLEA QVGMATRDTLCGDCWPGWFGPWGVPRVPCQPCSWAPLGTHGCDEWGRRARRG VEVAAGASSGGETRQPGNGTRA
<b>Purity</b>	> 90% as determined by SDS-PAGE.
<b>Notes</b>	Repeated freezing and thawing is not recommended. Store working aliquots at 4 centigrade for up to one week.

 Tel: 1-631-559-9269 1-516-512-3133

 Email: [info@creative-biomart.com](mailto:info@creative-biomart.com)  Fax: 1-631-938-8127

 45-1 Ramsey Road, Shirley, NY 11967, USA

**Storage**

The shelf life is related to many factors, storage state, buffer ingredients, storage temperature and the stability of the protein itself. Generally, the shelf life of liquid form is 6 months at -20 centigrade/-80 centigrade. The shelf life of lyophilized form is 12 months at -20 centigrade/-80 centigrade.

**Concentration**

A hardcopy of COA with reconstitution instruction is sent along with the products. Please refer to it for detailed information.

## GENE INFORMATION

**Gene Name**

RELT RELT tumor necrosis factor receptor [ Homo sapiens ]

**Official Symbol**

RELT

**Synonyms**

RELT; FLJ14993; TRLT; TNFRSF19L;

**Gene ID**

84957

**mRNA Refseq**

NM\_032871

**Protein Refseq**

NP\_116260

**MIM**

611211

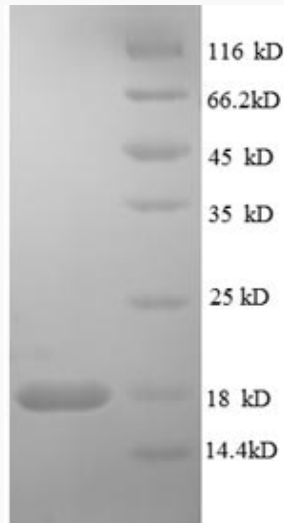
**UniProt ID**

Q969Z4

 Tel: 1-631-559-9269 1-516-512-3133

 Email: [info@creative-biomart.com](mailto:info@creative-biomart.com)  Fax: 1-631-938-8127

 45-1 Ramsey Road, Shirley, NY 11967, USA



(Tris-Glycine gel) Discontinuous SDS-PAGE (reduced) with 5% enrichment gel and 15% separation gel.

 Tel: 1-631-559-9269 1-516-512-3133

 Email: [info@creative-biomart.com](mailto:info@creative-biomart.com)  Fax: 1-631-938-8127

 45-1 Ramsey Road, Shirley, NY 11967, USA