

## Recombinant Human RELT Protein (Ser26-Ala160), C-His tagged

Cat. No. RELT-6638H    Lot. No. (See product label)

### SPECIFICATION

<b>Product Overview</b>	Recombinant human RELT (Ser26-Ala160) fused with the C-terminal His tag was expressed in mammalian cells.
<b>Species</b>	Human
<b>Source</b>	Mammalian Cells
<b>ProteinLength</b>	Ser26-Ala160
<b>Form</b>	Lyophilized powder/frozen liquid
<b>Molecular Mass</b>	14.85 kDa
<b>Purity</b>	> 90 % as determined by SDS-PAGE
<b>Notes</b>	For research use only.
<b>Storage</b>	Use a manual defrost freezer and avoid repeated freeze thaw cycles. Store at 2 to 8 centigrade for one week. Store at -20 to -80 centigrade for twelve months from the date of receipt.
<b>Storage Buffer</b>	Supplied as solution form in PBS or lyophilized from PBS.
<b>Reconstitution</b>	Reconstitute in sterile water for a stock solution.

 Tel: 1-631-559-9269    1-516-512-3133

 Email: [info@creative-biomart.com](mailto:info@creative-biomart.com)     Fax: 1-631-938-8127

 45-1 Ramsey Road, Shirley, NY 11967, USA

**Shipping** They are shipped out with dry ice/blue ice unless customers require otherwise.

## GENE INFORMATION

<b>Gene Name</b>	RELT RELT tumor necrosis factor receptor [ Homo sapiens (human) ]
<b>Official Symbol</b>	RELT
<b>Synonyms</b>	RELT; RELT tumor necrosis factor receptor; TNFRSF19L, tumor necrosis factor receptor superfamily, member 19 like; tumor necrosis factor receptor superfamily member 19L; FLJ14993; receptor expressed in lymphoid tissues; TRLT; TNFRSF19L;
<b>Gene ID</b>	84957
<b>mRNA Refseq</b>	NM_032871
<b>Protein Refseq</b>	NP_116260
<b>MIM</b>	611211
<b>UniProt ID</b>	Q969Z4

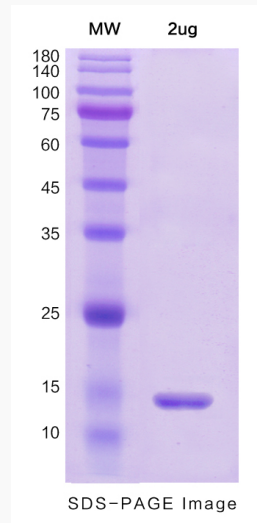
 Tel: 1-631-559-9269 1-516-512-3133

 Email: [info@creative-biomart.com](mailto:info@creative-biomart.com)  Fax: 1-631-938-8127

 45-1 Ramsey Road, Shirley, NY 11967, USA



SDS-PAGE



Tel: 1-631-559-9269 1-516-512-3133

Email: [info@creative-biomart.com](mailto:info@creative-biomart.com) Fax: 1-631-938-8127

45-1 Ramsey Road, Shirley, NY 11967, USA