

Recombinant Human REPIN1 Protein, His-tagged

Cat. No. REPIN1-510H Lot. No. (See product label)

SPECIFICATION

Product Overview	Recombinant Human REPIN1(His57~His314) fused with His tag at N-terminal was expressed in E. coli.
Species	Human
Source	E.coli
ProteinLength	His57~His314
Form	PBS, pH7.4, containing 0.01% SKL, 1mM DTT, 5% Trehalose and Proclin300.
Molecular Mass	33.4kDa
Endotoxin	<1.0EU per 1g (determined by the LAL method)
Purity	> 92%
Applications	Positive Control; Immunogen; SDS-PAGE; WB. If bio-activity of the protein is needed, please check active protein.
Stability	The thermal stability is described by the loss rate. The loss rate was determined by accelerated thermal degradation test, that is, incubate the protein at 37 centigrade for 48h, and no obvious degradation and precipitation were observed. The loss rate is less than 5% within the expiration date under appropriate storage condition.

 Tel: 1-631-559-9269 1-516-512-3133

 Email: info@creative-biomart.com  Fax: 1-631-938-8127

 45-1 Ramsey Road, Shirley, NY 11967, USA

Storage Avoid repeated freeze/thaw cycles. Store at 2-8 centigrade for one month. Aliquot and store at -80 centigrade for 12 months.

Reconstitution Reconstitute in PBS or others.

GENE INFORMATION

Gene Name [REPIN1 replication initiator 1 \[Homo sapiens \]](#)

Official Symbol [REPIN1](#)

Synonyms REPIN1; replication initiator 1; zinc finger protein 464 (RIP60) , ZNF464; AP4; H_DJ0584D14.12; replication initiation region protein (60kD); RIP60; Zfp464; zinc finger protein 464 (RIP60); zinc finger protein AP4; ATT-binding protein; zinc finger proten AP4; DHFR oribeta-binding protein RIP60; 60 kDa origin-specific DNA-binding protein; 60 kDa replication initiation region protein; ZNF464;

Gene ID [29803](#)

mRNA Refseq [NM_001099695](#)

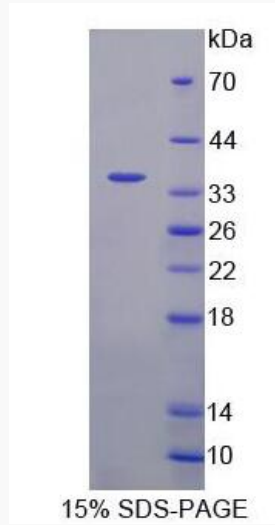
Protein Refseq [NP_001093165](#)

UniProt ID [Q9BWE0](#)

 Tel: 1-631-559-9269 1-516-512-3133

 Email: info@creative-biomart.com  Fax: 1-631-938-8127

 45-1 Ramsey Road, Shirley, NY 11967, USA



 Tel: 1-631-559-9269 1-516-512-3133

 Email: info@creative-biomart.com  Fax: 1-631-938-8127

 45-1 Ramsey Road, Shirley, NY 11967, USA