

Recombinant Human ret proto oncogene Protein, Flag tagged

Cat. No. RET-13H Lot. No. (See product label)

SPECIFICATION

Product Overview	Recombinant protein of human ret proto-oncogene (RET), transcript variant 2, residues 29-635aa, with C-terminal DDK tag, expressed in Sf9.
Species	Human
Source	Sf9 Cells
ProteinLength	29-635 aa
Description	<p>This gene encodes a transmembrane receptor and member of the tyrosine protein kinase family of proteins. Binding of ligands such as GDNF (glial cell-line derived neurotrophic factor) and other related proteins to the encoded receptor stimulates receptor dimerization and activation of downstream signaling pathways that play a role in cell differentiation, growth, migration and survival. The encoded receptor is important in development of the nervous system, and the development of organs and tissues derived from the neural crest. This proto-oncogene can undergo oncogenic activation through both cytogenetic rearrangement and activating point mutations. Mutations in this gene are associated with Hirschsprung disease and central hypoventilation syndrome and have been identified in patients with renal agenesis.</p>
Tag	C-Flag
Molecular Mass	67.78 kDa
Purity	> 80% as determined by SDS-PAGE and Coomassie blue staining

 Tel: 1-631-559-9269 1-516-512-3133

 Email: info@creative-biomart.com  Fax: 1-631-938-8127

 45-1 Ramsey Road, Shirley, NY 11967, USA

Notes	For testing in cell culture applications, please filter before use. Note that you may experience some loss of protein during the filtration process.
Stability	Stable for 12 months from the date of receipt of the product under proper storage and handling conditions. Avoid repeated freeze-thaw cycles.
Storage	Store at -80 centigrade.
Storage Buffer	50 mM Tris-HCl, 100 mM glycine, pH 8.0, 10% glycerol
Concentration	> 0.05 µg/µL as determined by microplate BCA method

GENE INFORMATION

Gene Name	RET ret proto-oncogene [Homo sapiens (human)]
Official Symbol	RET
Synonyms	RET; ret proto-oncogene; PTC; MTC1; HSCR1; MEN2A; MEN2B; CDHF12; CDHR16; RET-ELE1; proto-oncogene tyrosine-protein kinase receptor Ret; RET receptor tyrosine kinase; cadherin family member 12; cadherin-related family member 16; proto-oncogene c-Ret; rearranged during transfection; ret proto-oncogene (multiple endocrine neoplasia and medullary thyroid carcinoma 1, Hirschsprung disease); EC 2.7.10.1
Gene ID	5979
mRNA Refseq	NM_020975
Protein Refseq	NP_066124

 Tel: 1-631-559-9269 1-516-512-3133

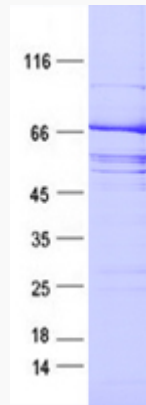
 Email: info@creative-biomart.com  Fax: 1-631-938-8127

 45-1 Ramsey Road, Shirley, NY 11967, USA

MIM 164761

UniProt ID P07949

SDS-PAGE



 Tel: 1-631-559-9269 1-516-512-3133

 Email: info@creative-biomart.com  Fax: 1-631-938-8127

 45-1 Ramsey Road, Shirley, NY 11967, USA