

Recombinant Human RET Protein (Leu29-Arg635), N-His tagged

Cat. No. RET-6175H Lot. No. (See product label)

SPECIFICATION

Product Overview	Recombinant human RET (Leu29-Arg635) fused with the N-His tag was expressed in E. coli.
Species	Human
Source	E.coli
ProteinLength	Leu29-Arg635
Form	Lyophilized powder/frozen liquid
Molecular Mass	70.09 kDa
Purity	> 90 % as determined by SDS-PAGE
Notes	For research use only.
Storage	Use a manual defrost freezer and avoid repeated freeze thaw cycles. Store at 2 to 8 centigrade for one week. Store at -20 to -80 centigrade for twelve months from the date of receipt.
Storage Buffer	0.01M PBS, pH 7.4, 0.02 % NLS
Reconstitution	Reconstitute in sterile water for a stock solution.

 Tel: 1-631-559-9269 1-516-512-3133

 Email: info@creative-biomart.com  Fax: 1-631-938-8127

 45-1 Ramsey Road, Shirley, NY 11967, USA

Shipping They are shipped out with dry ice/blue ice unless customers require otherwise.

GENE INFORMATION

Gene Name RET ret proto-oncogene [Homo sapiens (human)]

Official Symbol RET

Synonyms

RET; ret proto-oncogene; Hirschsprung disease 1, HSCR1, MEN2A, MEN2B, MTC1, multiple endocrine neoplasia and medullary thyroid carcinoma 1; proto-oncogene tyrosine-protein kinase receptor Ret; cadherin related family member 16; CDHF12; CDHR16; PTC; RET51; proto-oncogene c-Ret; receptor tyrosine kinase; RET transforming sequence; cadherin family member 12; hydroxyaryl-protein kinase; cadherin-related family member 16; ret proto-oncogene (multiple endocrine neoplasia and medullary thyroid carcinoma 1, Hirschsprung disease); MTC1; HSCR1; MEN2A; MEN2B; RET-ELE1;

Gene ID 5979

mRNA Refseq NM_020630

Protein Refseq NP_065681

MIM 164761

UniProt ID P07949

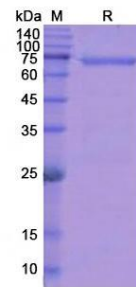
 Tel: 1-631-559-9269 1-516-512-3133

 Email: info@creative-biomart.com  Fax: 1-631-938-8127

 45-1 Ramsey Road, Shirley, NY 11967, USA



SDS-PAGE



Tel: 1-631-559-9269 1-516-512-3133

Email: info@creative-biomart.com Fax: 1-631-938-8127

45-1 Ramsey Road, Shirley, NY 11967, USA