

## Recombinant Human RETN Protein (Lys19-Pro108), C-His tagged

Cat. No. RETN-6028H Lot. No. (See product label)

### SPECIFICATION

<b>Product Overview</b>	Recombinant human RETN (Lys19-Pro108) fused with the C-terminal His tag was expressed in E. coli.
<b>Species</b>	Human
<b>Source</b>	E.coli
<b>ProteinLength</b>	Lys19-Pro108
<b>Form</b>	Lyophilized powder/frozen liquid
<b>Molecular Mass</b>	9.9 kDa
<b>Purity</b>	> 90 % as determined by SDS-PAGE
<b>Notes</b>	For research use only.
<b>Storage</b>	Use a manual defrost freezer and avoid repeated freeze thaw cycles. Store at 2 to 8 centigrade for one week. Store at -20 to -80 centigrade for twelve months from the date of receipt.
<b>Storage Buffer</b>	Supplied as solution form in PBS or lyophilized from PBS.
<b>Reconstitution</b>	Reconstitute in sterile water for a stock solution.

 Tel: 1-631-559-9269 1-516-512-3133

 Email: [info@creative-biomart.com](mailto:info@creative-biomart.com)  Fax: 1-631-938-8127

 45-1 Ramsey Road, Shirley, NY 11967, USA

**Shipping** They are shipped out with dry ice/blue ice unless customers require otherwise.

## GENE INFORMATION

**Gene Name** [RETN resistin \[ Homo sapiens \(human\) \]](#)

**Official Symbol** [RETN](#)

**Synonyms** RETN; resistin; ADSF; FIZZ3; RETN1; resistin delta2; found in inflammatory zone 3; cysteine-rich secreted protein FIZZ3; adipose tissue-specific secretory factor; cysteine-rich secreted protein A12-alpha-like 2; c/EBP-epsilon-regulated myeloid-specific secreted cysteine-rich protein; C/EBP-epsilon regulated myeloid-specific secreted cysteine-rich protein precursor 1; RSTN; XCP1; MGC126603; MGC126609;

**Gene ID** [56729](#)

**mRNA Refseq** [NM\\_001193374](#)

**Protein Refseq** [NP\\_001180303](#)

**MIM** [605565](#)

**UniProt ID** [Q9HD89](#)

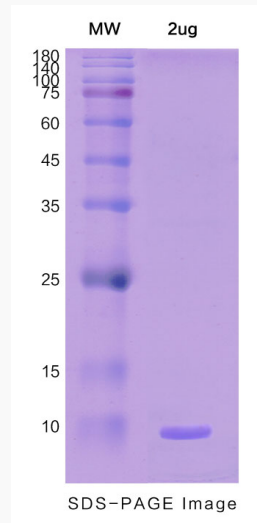
 Tel: 1-631-559-9269 1-516-512-3133

 Email: [info@creative-biomart.com](mailto:info@creative-biomart.com)  Fax: 1-631-938-8127

 45-1 Ramsey Road, Shirley, NY 11967, USA



**SDS-PAGE**



Tel: 1-631-559-9269 1-516-512-3133

Email: [info@creative-biomart.com](mailto:info@creative-biomart.com) Fax: 1-631-938-8127

45-1 Ramsey Road, Shirley, NY 11967, USA