

Recombinant Human RETN Protein, Myc/DDK-tagged, C13 and N15-labeled

Cat. No. RETN-6571H **Lot. No.** (See product label)

SPECIFICATION

Product Overview	RETN MS Standard C13 and N15-labeled recombinant protein (NP_065148) with a C-terminal MYC/DDK tag, was expressed in HEK293 cells.
Species	Human
Source	HEK293
Description	This gene belongs to the family defined by the mouse resistin-like genes. The characteristic feature of this family is the C-terminal stretch of 10 cys residues with identical spacing. The mouse homolog of this protein is secreted by adipocytes, and may be the hormone potentially linking obesity to type II diabetes. Alternatively spliced transcript variants encoding the same protein have been found for this gene.
Molecular Mass	11.4 kDa
AA Sequence	MKALCLLLL PVLGLLVSSKTLCSMEEA INERIQEVAGSLIFRAISSIGLE CQSVTSRGDL ATCPRGFAVTGCTCGSACGSWDVRAETTCHCQCAGMDWTGARCCRVQPTRTRPL EQKLISEEDLAANDILDYKDDDDKV
Purity	> 80% as determined by SDS-PAGE and Coomassie blue staining
Stability	Stable for 3 months from receipt of products under proper storage and handling conditions.

 Tel: 1-631-559-9269 1-516-512-3133

 Email: info@creative-biomart.com  Fax: 1-631-938-8127

 45-1 Ramsey Road, Shirley, NY 11967, USA

Storage	Store at -80 centigrade. Avoid repeated freeze-thaw cycles.
Concentration	50 µg/mL as determined by BCA
Storage Buffer	100 mM glycine, 25 mM Tris-HCl, pH 7.3.
GENE INFORMATION	
Gene Name	RETN resistin [Homo sapiens (human)]
Official Symbol	RETN
Synonyms	RETN; resistin; ADSF; FIZZ3; RETN1; resistin delta2; found in inflammatory zone 3; cysteine-rich secreted protein FIZZ3; adipose tissue-specific secretory factor; cysteine-rich secreted protein A12-alpha-like 2; c/EBP-epsilon-regulated myeloid-specific secreted cysteine-rich protein; C/EBP-epsilon regulated myeloid-specific secreted cysteine-rich protein precursor 1; RSTN; XCP1; MGC126603; MGC126609;
Gene ID	56729
mRNA Refseq	NM_020415
Protein Refseq	NP_065148
MIM	605565
UniProt ID	Q9HD89

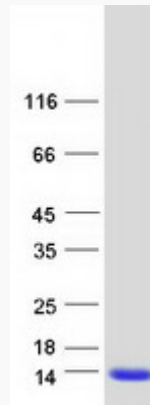
 Tel: 1-631-559-9269 1-516-512-3133

 Email: info@creative-biomart.com  Fax: 1-631-938-8127

 45-1 Ramsey Road, Shirley, NY 11967, USA



SDS-PAGE



Tel: 1-631-559-9269 1-516-512-3133

Email: info@creative-biomart.com Fax: 1-631-938-8127

45-1 Ramsey Road, Shirley, NY 11967, USA