

## Recombinant Cattle RETN protein, His & GST-tagged

Cat. No. RETN-7820C Lot. No. (See product label)

### SPECIFICATION

<b>Product Overview</b>	Recombinant Cattle RETN aa. (Gln19~Gln109 (Accession # Q762I5)) fused with N-terminal His & GST tag was produced in E. coli cells.
<b>Species</b>	Cattle
<b>Source</b>	E.coli
<b>ProteinLength</b>	Gln19~Gln109
<b>Form</b>	Freeze-dried powder
<b>Molecular Mass</b>	Predicted Molecular Mass: 42.0kDa
<b>Endotoxin</b>	<1.0EU per 1g (determined by the LAL method)
<b>Purity</b>	>95%
<b>Characteristic</b>	The isoelectric point is 6.6.
<b>Applications</b>	SDS-PAGE; WB; ELISA; IP
<b>Stability</b>	The thermal stability is described by the loss rate. The loss rate was determined by accelerated thermal degradation test, that is, incubate the protein at 37°C for 48h, and no obvious degradation and precipitation were observed. The loss rate is less than 5% within the expiration date under appropriate storage condition.

 Tel: 1-631-559-9269 1-516-512-3133

 Email: [info@creative-biomart.com](mailto:info@creative-biomart.com)  Fax: 1-631-938-8127

 45-1 Ramsey Road, Shirley, NY 11967, USA

<b>Storage</b>	Avoid repeated freeze/thaw cycles. Store at 2-8°C for one month. Aliquot and store at -80°C for 12 months.
<b>Storage buffer</b>	Supplied as lyophilized form in PBS, pH7.4, containing 5% trehalose, 0.01% sarcosyl
<b>Reconstitution</b>	Reconstitute in sterile PBS, pH7.2-pH7.4.

## GENE INFORMATION

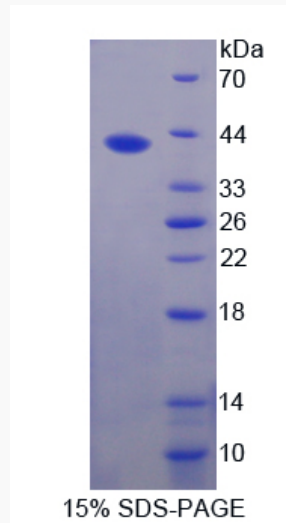
<b>Gene Name</b>	RETN resistin [ <i>Bos taurus</i> (cattle) ]
<b>Official Symbol</b>	RETN
<b>Synonyms</b>	RETN; RSTN; resistin; adipocyte specific secreted hormone
<b>Gene ID</b>	369020
<b>mRNA Refseq</b>	NM_183362.1
<b>Protein Refseq</b>	NP_899206.1
<b>UniProt ID</b>	Q762I5

 Tel: 1-631-559-9269 1-516-512-3133

 Email: [info@creative-biomart.com](mailto:info@creative-biomart.com)  Fax: 1-631-938-8127

 45-1 Ramsey Road, Shirley, NY 11967, USA

**SDS-PAGE**



 Tel: 1-631-559-9269 1-516-512-3133

 Email: [info@creative-biomart.com](mailto:info@creative-biomart.com)  Fax: 1-631-938-8127

 45-1 Ramsey Road, Shirley, NY 11967, USA