

Recombinant Human REV1 Protein (Asn472-Val652), N-His tagged

Cat. No. REV1-5902H Lot. No. (See product label)

SPECIFICATION

Product Overview	Recombinant human REV1 (Asn472-Val652) fused with the N-His tag was expressed in E. coli.
Species	Human
Source	E.coli
ProteinLength	Asn472-Val652
Form	Lyophilized powder/frozen liquid
Molecular Mass	22.11 kDa
Purity	> 90 % as determined by SDS-PAGE
Notes	For research use only.
Storage	Use a manual defrost freezer and avoid repeated freeze thaw cycles. Store at 2 to 8 centigrade for one week. Store at -20 to -80 centigrade for twelve months from the date of receipt.
Storage Buffer	0.01M PBS, pH 7.4, 0.02 % NLS
Reconstitution	Reconstitute in sterile water for a stock solution.

 Tel: 1-631-559-9269 1-516-512-3133

 Email: info@creative-biomart.com  Fax: 1-631-938-8127

 45-1 Ramsey Road, Shirley, NY 11967, USA

Shipping They are shipped out with dry ice/blue ice unless customers require otherwise.

GENE INFORMATION

Gene Name REV1 REV1 homolog (*S. cerevisiae*) [*Homo sapiens* (human)]

Official Symbol REV1

Synonyms REV1; REV1 homolog (*S. cerevisiae*); REV1 (yeast homolog) like, REV1 like (yeast), REV1L; DNA repair protein REV1; AIBP80; REV1- like; alpha integrin-binding protein 80; rev1-like terminal deoxycytidyl transferase; REV1L; FLJ21523; MGC26225; MGC163283;

Gene ID 51455

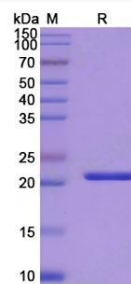
mRNA Refseq NM_001037872

Protein Refseq NP_001032961

MIM 606134

UniProt ID Q9UBZ9

SDS-PAGE



 Tel: 1-631-559-9269 1-516-512-3133

 Email: info@creative-biomart.com  Fax: 1-631-938-8127

 45-1 Ramsey Road, Shirley, NY 11967, USA