

# Recombinant Full Length Human REXO2 Protein, C-Flag-tagged

**Cat. No.** REXO2-1495HFL    **Lot. No.** (See product label)

## SPECIFICATION

|                         |   |
|-------------------------|---|
| <b>Product Overview</b> | Recombinant Full Length Human REXO2 Protein, fused to Flag-tag at C-terminus, was expressed in Mammalian cells.   |
| <b>Species</b>          | Human   |
| <b>Source</b>           | Mammalian Cells   |
| <b>Description</b>      | This gene encodes a 3'-to-5' exonuclease specific for small (primarily 5 nucleotides or less in length) single-stranded RNA and DNA oligomers. This protein may have a role in DNA repair, replication, and recombination, and in RNA processing and degradation. It may also be involved in resistance of human cells to UV-C-induced cell death through its role in the DNA repair process. |
| <b>Form</b>             | 25 mM Tris HCl, pH 7.3, 100 mM glycine, 10% glycerol.   |
| <b>Molecular Mass</b>   | 26.7 kDa  |
| <b>AA Sequence</b>      | MLGGSLSRLLRGVGGSHGRFGARGVREGGAAMAAGESMAQRMVWVDLEMTGL<br>DIEKDQIEMACLITDS DLNILAEGPNLIKQPDELLDSMSDWCKEHHGKSGLTKAVKE<br>STITLQQAIEYEFLSFVRQQTPPGLCPLA GNSVHEDKKFLDKYMPQFMKHLHYRIIDV<br>STVKELCRRWYPEEYEFAPKKAASHRALDDISESIKELQFY<br>RNNIFKKKIDEKRRKIIENGENEKTVSTRTRPLEQKLISEEDLAANDILDYKDDDDKV  |
| <b>Purity</b>           | > 80% as determined by SDS-PAGE and Coomassie blue staining.  |

 Tel: 1-631-559-9269    1-516-512-3133

 Email: [info@creative-biomart.com](mailto:info@creative-biomart.com)     Fax: 1-631-938-8127

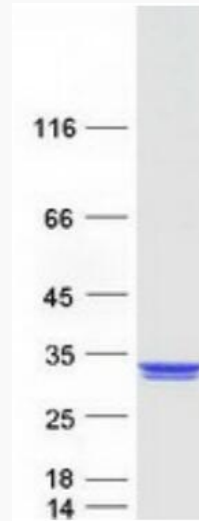
 45-1 Ramsey Road, Shirley, NY 11967, USA

|                         |   |
|-------------------------|---|
| <b>Stability</b>        | Stable for 12 months from the date of receipt of the product under proper storage and handling conditions. Avoid repeated freeze-thaw cycles. |
| <b>Storage</b>          | Store at -80 centigrade.  |
| <b>Concentration</b>    | >50 ug/mL as determined by microplate BCA method.   |
| <b>Preparation</b>      | Recombinant protein was captured through anti-DDK affinity column followed by conventional chromatography steps.                              |
| <b>Full Length</b>      | Full L.   |
| <b>GENE INFORMATION</b> |   |
| <b>Gene Name</b>        | REXO2 RNA exonuclease 2 [ Homo sapiens (human) ]  |
| <b>Official Symbol</b>  | REXO2   |
| <b>Synonyms</b>         | RFN; SFN; REX2; CGI-114   |
| <b>Gene ID</b>          | 25996   |
| <b>mRNA Refseq</b>      | NM_015523.4   |
| <b>Protein Refseq</b>   | NP_056338.2   |
| <b>MIM</b>              | 607149  |
| <b>UniProt ID</b>       | Q9Y3B8  |

 Tel: 1-631-559-9269 1-516-512-3133

 Email: [info@creative-biomart.com](mailto:info@creative-biomart.com)  Fax: 1-631-938-8127

 45-1 Ramsey Road, Shirley, NY 11967, USA



Coomassie blue staining of purified REXO2 protein.

 Tel: 1-631-559-9269 1-516-512-3133

 Email: [info@creative-biomart.com](mailto:info@creative-biomart.com)  Fax: 1-631-938-8127

 45-1 Ramsey Road, Shirley, NY 11967, USA