

Recombinant Human REXO2 protein, His-tagged

Cat. No. REXO2-1941H **Lot. No.** (See product label)

SPECIFICATION

Product Overview	Recombinant Human REXO2 aa. (Gln41~Asn213 (Accession # Q9Y3B8)) fused with N-terminal His tag was produced in E. coli cells.
Species	Human
Source	E.coli
ProteinLength	Gln41~Asn213
Description	This gene encodes a 3'-to-5' exonuclease specific for small (primarily 5 nucleotides or less in length) single-stranded RNA and DNA oligomers. This protein may have a role in DNA repair, replication, and recombination, and in RNA processing and degradation. It may also be involved in resistance of human cells to UV-C-induced cell death through its role in the DNA repair process.
Form	Freeze-dried powder
Molecular Mass	Predicted Molecular Mass: 21.7kDa
Endotoxin	<1.0EU per 1ug (determined by the LAL method)
Purity	>95%
Applications	SDS-PAGE; WB; ELISA; IP.

 Tel: 1-631-559-9269 1-516-512-3133

 Email: info@creative-biomart.com  Fax: 1-631-938-8127

 45-1 Ramsey Road, Shirley, NY 11967, USA

Stability	The thermal stability is described by the loss rate. The loss rate was determined by accelerated thermal degradation test, that is, incubate the protein at 37°C for 48h, and no obvious degradation and precipitation were observed. The loss rate is less than 5% within the expiration date under appropriate storage condition.
Storage	Avoid repeated freeze/thaw cycles. Store at 2-8°C for one month. Aliquot and store at -80°C for 12 months.
Storage buffer	Supplied as lyophilized form in 20mM Tris, 150mM NaCl, pH8.0, containing 0.01% sarcosyl and 5% trehalose.
Reconstitution	Reconstitute in sterile ddH ₂ O.
Isoelectric Point	5.7

GENE INFORMATION

Gene Name	REXO2 RNA exonuclease 2 [Homo sapiens (human)]
Official Symbol	REXO2
Synonyms	REXO2; RNA exonuclease 2; RFN; SFN; REX2; CGI-114; oligoribonuclease, mitochondrial; REX2, RNA exonuclease 2 homolog; RNA exonuclease 2 homolog; small fragment nuclease
Gene ID	25996
mRNA Refseq	NM_015523.3
Protein Refseq	NP_056338.2

 Tel: 1-631-559-9269 1-516-512-3133

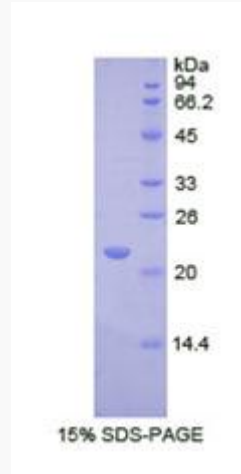
 Email: info@creative-biomart.com  Fax: 1-631-938-8127

 45-1 Ramsey Road, Shirley, NY 11967, USA

UniProt ID

Q9Y3B8

SDS-PAGE



 Tel: 1-631-559-9269 1-516-512-3133

 Email: info@creative-biomart.com  Fax: 1-631-938-8127

 45-1 Ramsey Road, Shirley, NY 11967, USA