

## Recombinant Human REXO2 Protein, GST-tagged

**Cat. No.** REXO2-4033H    **Lot. No.** (See product label)

### SPECIFICATION

<b>Product Overview</b>	Human DKFZP566E144 full-length ORF ( AAH03502, 1 a.a. - 79 a.a.) recombinant protein with GST-tag at N-terminal.
<b>Species</b>	Human
<b>Source</b>	Wheat Germ
<b>Description</b>	This gene encodes a 3'-to-5' exonuclease specific for small (primarily 5 nucleotides or less in length) single-stranded RNA and DNA oligomers. This protein may have a role in DNA repair, replication, and recombination, and in RNA processing and degradation. It may also be involved in resistance of human cells to UV-C-induced cell death through its role in the DNA repair process. [provided by RefSeq, Nov 2011]
<b>Molecular Mass</b>	34.43 kDa
<b>AA Sequence</b>	MLGGSLGSRLLRGVGGSHGRFGARGVREGGAAMAAGESMAQRMVWVDLEMTGL DIEKDQIEMACLITDSDLNILAEGT
<b>Applications</b>	Enzyme-linked Immunoabsorbent Assay Western Blot (Recombinant protein) Antibody Production Protein Array
<b>Notes</b>	Best use within three months from the date of receipt of this protein.

 Tel: 1-631-559-9269    1-516-512-3133

 Email: [info@creative-biomart.com](mailto:info@creative-biomart.com)     Fax: 1-631-938-8127

 45-1 Ramsey Road, Shirley, NY 11967, USA

**Storage** Store at -80 centigrade. Aliquot to avoid repeated freezing and thawing.

**Storage Buffer** 50 mM Tris-HCl, 10 mM reduced Glutathione, pH=8.0 in the elution buffer.

## GENE INFORMATION

**Gene Name** REXO2 REX2, RNA exonuclease 2 homolog (*S. cerevisiae*) [ *Homo sapiens* ]

**Official Symbol** REXO2

**Synonyms** REXO2; REX2, RNA exonuclease 2 homolog (*S. cerevisiae*); oligoribonuclease, mitochondrial; CGI 114; DKFZP566E144; SFN; small fragment nuclease; RNA exonuclease 2 homolog; RFN; REX2; CGI-114; MGC111570; DKFZp566E144;

**Gene ID** 25996

**mRNA Refseq** NM\_015523

**Protein Refseq** NP\_056338

**MIM** 607149

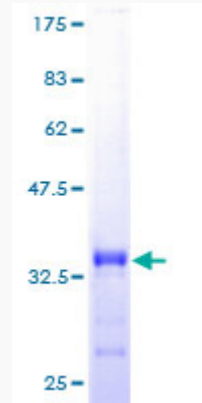
**UniProt ID** Q9Y3B8

 Tel: 1-631-559-9269 1-516-512-3133

 Email: [info@creative-biomart.com](mailto:info@creative-biomart.com)  Fax: 1-631-938-8127

 45-1 Ramsey Road, Shirley, NY 11967, USA

**Quality Control  
Testing**



12.5% SDS-PAGE Stained with Coomassie Blue.

 Tel: 1-631-559-9269 1-516-512-3133

 Email: [info@creative-biomart.com](mailto:info@creative-biomart.com)  Fax: 1-631-938-8127

 45-1 Ramsey Road, Shirley, NY 11967, USA