

Recombinant Human ADRB2 (G16R,E27Q) Transmembrane protein, His-tagged(VLPs)

Cat. No. RFL-16437HF Lot. No. (See product label)

SPECIFICATION

Product Overview Recombinant Human ADRB2 (G16R,E27Q) Transmembrane protein(VLPs)(P07550)(1-413aa) was expressed in Mammalian cells with a polyhistidine tag at the C-terminus.

Species Human

Source Mammalian cells

ProteinLength 1-413 aa (G16R,E27Q)

Form Lyophilized from a 0.2 µm filtered PBS, 6% Trehalose, pH 7.4.

Molecular Mass 47.8 kDa

AASequence

```

MGQPGNGSAFLLAPNGSHAPDHDVTQERDEVWVVGMGIVMSLIVLAIVFGNVLVITA
IAKFERLQVTNYFITSLACADLVMGLAVVPGAHAHILMKMWTFGNFWCEFWTSIDV
LCVTASIELCVIAVDRYFAITSPFKYQSLLTKNKARVIILMVWIVSGLTSFLPIQMHWY
RATHQEAINCYANETCCDFFTNQAYAIASSIVSFYVPLVIMVFVYSRVFQEAKRQLQK
IDKSEGRFHVQNLSQLVEQDGRGTGHGLRRSSKFCLKEHKALKTLGIIMGTFTLCWLFP
FIVNIVHVIQDNLIRKEVYILLNWIGYVNSGFNPLIYCRSPDFRIAFQELLCLRRSSLKAY
GNGYSSNGNTGEQSGYHVEQEKENKLLCEDLPGTEDFVGHQGTVPSDNIDSQGRN
CSTNDSLL
    
```

Purity Greater than 95% as determined by SEC-HPLC.

 Tel: 1-631-559-9269 1-516-512-3133

 Email: info@creative-biomart.com  Fax: 1-631-938-8127

 45-1 Ramsey Road, Shirley, NY 11967, USA

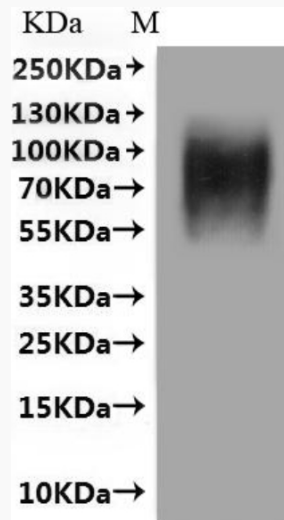
Storage Store at -20°C/-80°C upon receipt, aliquoting is necessary for mutiple use. Avoid repeated freeze-thaw cycles.

Reconstitution We recommend that this vial be briefly centrifuged prior to opening to bring the contents to the bottom. Please reconstitute protein indeionized sterile water to a concentration of 0.1-1.0 mg/mL.

GENE INFORMATION

Official Symbol ADRB2

SDS-PAGE



Tel: 1-631-559-9269 1-516-512-3133

Email: info@creative-biomart.com Fax: 1-631-938-8127

45-1 Ramsey Road, Shirley, NY 11967, USA