

Recombinant Full Length Human Cxcr1 Protein, His tagged

Cat. No. RFL10112HF Lot. No. (See product label)

SPECIFICATION

Product Overview	Recombinant Full Length Human Cxcr1 Protein with His tag was expressed in E. coli.
Species	Human
Source	E.coli
Description	<p>Predicted to enable chemokine binding activity and chemokine receptor activity. Predicted to be involved in several processes, including calcium-mediated signaling; neutrophil chemotaxis; and receptor internalization. Predicted to be located in plasma membrane. Predicted to be active in external side of plasma membrane. Biomarker of membranoproliferative glomerulonephritis. Human ortholog(s) of this gene implicated in human immunodeficiency virus infectious disease; pyelonephritis; and urinary tract infection. Orthologous to human CXCR1 (C-X-C motif chemokine receptor 1).</p>
AASequence	<p>MSNITDPQMWDFDDLNFTGMPPADEDYSPCMLETETLNKYVVIIAYALVFLLSLLGN SLVMLVILYSRVGRSVTDVYLLNLALADLLFALTLPIWAASKVNGWIFGTFLCKVVSLL KEVNFYSGILLACISVDRYLAI VHATRTL TQKRHLVKFVCLGCWGLSMNLSLPPFFLF RQAYHPNNSSPVCYEVLGNDTAKWRMVLRLPHTFGFIVPLFVMLFCYGFTLRTLFLK AHMGQKHRAMRVIFAVVLIFLLCWLPLYNLVLLADTLMRTQVIQESCERRN NIGRALD ATEILGFLHSCLNPIIYAFIQNFRHGFLKILAMHGLVSKFLARHRVTSYTSSSVNVS SNL</p>
Molecular Mass	41.3 kDa
Purity	≥85%, by SDS-PAGE

 Tel: 1-631-559-9269 1-516-512-3133

 Email: info@creative-biomart.com  Fax: 1-631-938-8127

 45-1 Ramsey Road, Shirley, NY 11967, USA

Storage	Store it under sterile conditions at -20 to -80 centigrade. It is recommended that the protein be aliquoted for optimal storage. Avoid repeated freeze-thaw cycles.
Storage Buffer	Lyophilized from PBS, 0.05% Brij 78, 6% Trehalose, pH7.4 The volume before lyophilization is 39 µL/vial.
Reconstitution	We recommend that this vial be briefly centrifuged prior to opening to bring the contents to the bottom. Please reconstitute protein in deionized sterile water to a concentration of 0.1-1.0 mg/mL. We recommend to add 5-50% of glycerol (final concentration) and aliquot for long-term storage at -20/-80 centigrade. Our default final concentration of glycerol is 50%. Customers could use it as reference.

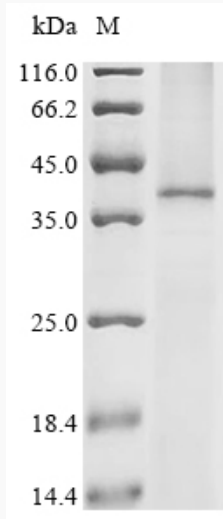
GENE INFORMATION

Gene Name	Cxcr1 C-X-C motif chemokine receptor 1 [Rattus norvegicus (Norway rat)]
Official Symbol	CXCR1
Synonyms	Cxcr1; C-X-C motif chemokine receptor 1; Il8ra; IL-8R A; C-X-C chemokine receptor type 1; chemokine (C-X-C motif) receptor 1; high affinity interleukin-8 receptor A; interleukin 8 receptor, alpha
Gene ID	54258
mRNA Refseq	NM_019310
Protein Refseq	NP_062183
UniProt ID	P70612

 Tel: 1-631-559-9269 1-516-512-3133

 Email: info@creative-biomart.com  Fax: 1-631-938-8127

 45-1 Ramsey Road, Shirley, NY 11967, USA

SDS-PAGE

(Tris-Glycine gel) Discontinuous SDS-PAGE (reduced) with 5% enrichment gel and 15% separation gel. Boiling SDS-treated samples may result in membrane protein aggregation. Incubation at 37 centigrade for 10 min is an effective alternative.

☎ Tel: 1-631-559-9269 1-516-512-3133

☎ Email: info@creative-biomart.com ☎ Fax: 1-631-938-8127

☎ 45-1 Ramsey Road, Shirley, NY 11967, USA