

Recombinant Human RGMA protein, His-Avi-tagged

Cat. No. RGMA-086H **Lot. No.** (See product label)

SPECIFICATION

Product Overview	Recombinant Human RGMa Protein is expressed from mammalian with a His Tag and Avi Tag at the C-terminal. It contains Met 1-Pro 47.
Species	Human
Source	HEK293
ProteinLength	Met 1-Pro 47
Description	Repulsive guidance molecule (RGM) is a glycosylphosphatidylinositol (GPI)-anchored glycoprotein that has diverse functions in the developing and pathological central nervous system (CNS). The binding of RGM to its receptor neogenin regulates axon guidance, neuronal differentiation, and survival during the development of the CNS. RGMa induces T cell activation in experimental autoimmune encephalomyelitis (EAE), which is the animal model of multiple sclerosis (MS). RGM is expressed in pathogenic Th17 cells and induces neurodegeneration by binding to neogenin.
Form	Supplied as 0.22um filtered solution in PBS (pH 7.4).
Molecular Mass	The protein has a predicted MW of 44.5 kDa. Due to glycosylation, the protein migrates to 45-48 KDa based on Bis-Tris PAGE result.
Endotoxin	Less than 0.1 EU per ug by the LAL method.
Purity	> 95% as determined by Bis-Tris PAGE; > 95% as determined by HPLC

 Tel: 1-631-559-9269 1-516-512-3133

 Email: info@creative-biomart.com  Fax: 1-631-938-8127

 45-1 Ramsey Road, Shirley, NY 11967, USA

Storage The product should be stored at -70°C. Please do not repeated freeze-thaw cycles.

GENE INFORMATION

Gene Name [RGMA](#)

Official Symbol [RGMA](#)

Synonyms Repulsive guidance molecule A, RGM domain family member A, RGMA

Gene ID [56963](#)

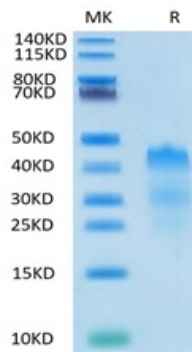
mRNA Refseq [NM_001166283.1](#)

Protein Refseq [NP_001159755.1](#)

MIM [607362](#)

UniProt ID [Q96B86](#)

**Tris-Bis PAGE of
RGMA-086H**

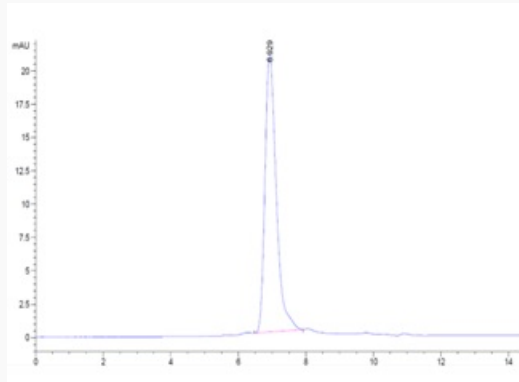


 Tel: 1-631-559-9269 1-516-512-3133

 Email: info@creative-biomart.com  Fax: 1-631-938-8127

 45-1 Ramsey Road, Shirley, NY 11967, USA

SEC-HPLC of RGMA-086H



 Tel: 1-631-559-9269 1-516-512-3133

 Email: info@creative-biomart.com  Fax: 1-631-938-8127

 45-1 Ramsey Road, Shirley, NY 11967, USA