

## Recombinant Human RGMA protein, His-Avi-tagged

Cat. No. RGMA-5744H Lot. No. (See product label)

### SPECIFICATION

<b>Product Overview</b>	Recombinant Human RGMA protein(Q96B86-1)(Cys48-Gly422), fused with C-terminal His and Avi tag, was expressed in HEK293.
<b>Species</b>	Human
<b>Source</b>	HEK293
<b>ProteinLength</b>	Cys48-Gly422
<b>Tag</b>	C-His-Avi
<b>Form</b>	Lyophilized from 0.22µm filtered solution in PBS (pH 7.4). Normally 5% trehalose is added as protectant before lyophilization.
<b>Bio-activity</b>	Immobilized Human RGMa, His Tag at 5ug/ml (100ul/Well) on the plate. Dose response curve for Human Neogenin, hFc Tag with the EC50 of 0.17ug/ml determined by ELISA.
<b>Molecular Mass</b>	The protein has a predicted MW of 44.5 kDa. Due to glycosylation, the protein migrates to 45-48 kDa based on Tris-Bis PAGE result.
<b>Endotoxin</b>	Less than 1EU per µg by the LAL method.
<b>Purity</b>	> 95% as determined by Tris-Bis PAGE;> 95% as determined by HPLC

 Tel: 1-631-559-9269 1-516-512-3133

 Email: [info@creative-biomart.com](mailto:info@creative-biomart.com)  Fax: 1-631-938-8127

 45-1 Ramsey Road, Shirley, NY 11967, USA

**Storage** Reconstituted protein stable at -80°C for 12 months, 4°C for 1 week. Use a manual defrost freezer and avoid repeated freeze-thaw cycles.

**Reconstitution** Centrifuge tubes before opening. Reconstituting to a concentration more than 100 µg/ml is recommended. Dissolve the lyophilized protein in distilled water.

## GENE INFORMATION

**Gene Name** RGMA RGM domain family, member A [ Homo sapiens ]

**Official Symbol** RGMA

**Synonyms** RGMA; RGM domain family, member A; repulsive guidance molecule A; RGM;

**Gene ID** 56963

**mRNA Refseq** NM\_001166283

**Protein Refseq** NP\_001159755

**MIM** 607362

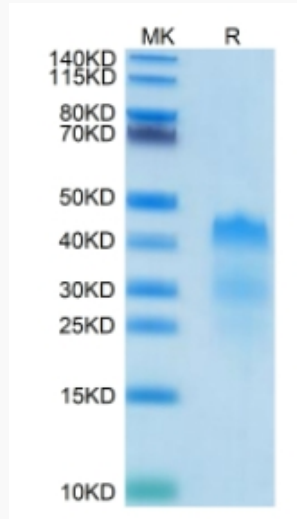
**UniProt ID** Q96B86

 Tel: 1-631-559-9269 1-516-512-3133

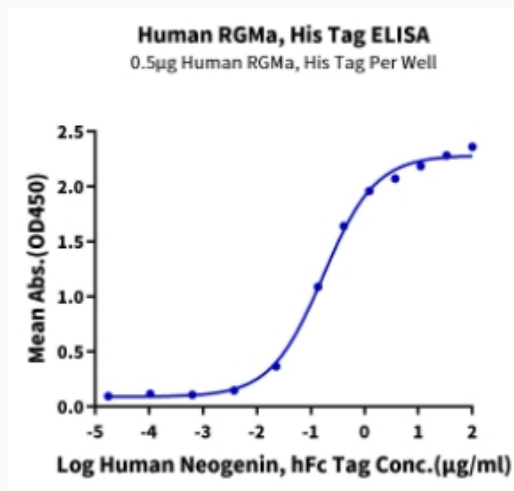
 Email: [info@creative-biomart.com](mailto:info@creative-biomart.com)  Fax: 1-631-938-8127

 45-1 Ramsey Road, Shirley, NY 11967, USA

**Tris-Bis PAGE**



**ELISA Data**



 Tel: 1-631-559-9269 1-516-512-3133

 Email: [info@creative-biomart.com](mailto:info@creative-biomart.com)  Fax: 1-631-938-8127

 45-1 Ramsey Road, Shirley, NY 11967, USA