

Recombinant Human RGMA Protein (Pro169-Gly422), N-His tagged

Cat. No. RGMA-6034H Lot. No. (See product label)

SPECIFICATION

Product Overview	Recombinant human RGMA (Pro169-Gly422) fused with the N-terminal His tag was expressed in E. coli.
Species	Human
Source	E.coli
ProteinLength	Pro169-Gly422
Form	Lyophilized powder/frozen liquid
Molecular Mass	27.94 kDa
Purity	> 90 % as determined by SDS-PAGE
Notes	For research use only.
Storage	Use a manual defrost freezer and avoid repeated freeze thaw cycles. Store at 2 to 8 centigrade for one week. Store at -20 to -80 centigrade for twelve months from the date of receipt.
Storage Buffer	Supplied as solution form in PBS or lyophilized from PBS.
Reconstitution	Reconstitute in sterile water for a stock solution.

 Tel: 1-631-559-9269 1-516-512-3133

 Email: info@creative-biomart.com  Fax: 1-631-938-8127

 45-1 Ramsey Road, Shirley, NY 11967, USA



Shipping

They are shipped out with dry ice/blue ice unless customers require otherwise.

GENE INFORMATION

Gene Name

RGMA RGM domain family, member A [Homo sapiens (human)]

Official Symbol

RGMA

Synonyms

RGMA; RGM domain family, member A; repulsive guidance molecule A; RGM;

Gene ID

56963

mRNA Refseq

NM_001166283

Protein Refseq

NP_001159755

MIM

607362

UniProt ID

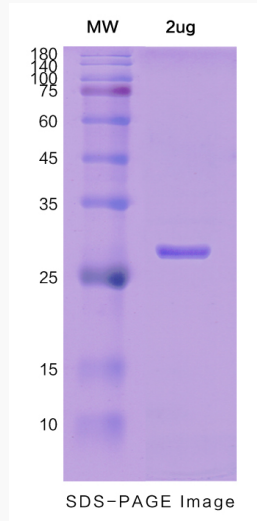
Q96B86

 Tel: 1-631-559-9269 1-516-512-3133

 Email: info@creative-biomart.com  Fax: 1-631-938-8127

 45-1 Ramsey Road, Shirley, NY 11967, USA

SDS-PAGE



 Tel: 1-631-559-9269 1-516-512-3133

 Email: info@creative-biomart.com  Fax: 1-631-938-8127

 45-1 Ramsey Road, Shirley, NY 11967, USA