

Recombinant Human RGMA Protein, Myc/DDK-tagged, C13 and N15-labeled

Cat. No. RGMA-6376H Lot. No. (See product label)

SPECIFICATION

Product Overview	RGMA MS Standard C13 and N15-labeled recombinant protein (NP_064596) with a C-terminal MYC/DDK tag, was expressed in HEK293 cells.
Species	Human
Source	HEK293
Description	This gene encodes a member of the repulsive guidance molecule family. The encoded protein is a glycosylphosphatidylinositol-anchored glycoprotein that functions as an axon guidance protein in the developing and adult central nervous system. This protein may also function as a tumor suppressor in some cancers. Alternate splicing results in multiple transcript variants.
Molecular Mass	49.2 kDa
AA Sequence	<p>MQPPRERLVVTGRAGWMGMGRGAGRSALGFWPTLAFLLCSFPAATSPCKILKCNS EFWSATSGSHAPASDDTPEFCAALRSYALCTRRTARTCRGDLAYHSAVHGIEDLMS QHNCSDKGPTSQPRLRTLPPAGDSQERSDSPEICHYEKSFHKHSATPNYTHCGLFG DPHLRTFTDRFQTCKVQGAWPLIDNNYLNQVNTNTPVLPGSAATATSKLTIIFKNFQE CVDQKVYQAEMDELPAAFVDGSKNGGDKHGANSKITEK/SGQHVEIQAKYIGTTIV VRQVGRYLTFAVRMPEEVVNAVEDWDSQGLYLCLRGCPNQQIDFQAFHTNAEGT GARRLAAASPAPTAPETFPYETAVAKCKEKL PVEDLYYQACVFDLLTTGDVNFTLAA YYALEDVKMLHSNKDKLHLYERTRDLPGRAAAGLPLAPRPLL GALVPLLALLPVFCS</p>

Tel: 1-631-559-9269 1-516-512-3133

Email: info@creative-biomart.com Fax: 1-631-938-8127

45-1 Ramsey Road, Shirley, NY 11967, USA

GPSGPTRTRRLEQKLISEEDLAANDILDYKDDDDKV

Purity > 80% as determined by SDS-PAGE and Coomassie blue staining

Stability Stable for 3 months from receipt of products under proper storage and handling conditions.

Storage Store at -80 centigrade. Avoid repeated freeze-thaw cycles.

Concentration 50 µg/mL as determined by BCA

Storage Buffer 100 mM glycine, 25 mM Tris-HCl, pH 7.3.

GENE INFORMATION

Gene Name [RGMA repulsive guidance molecule BMP co-receptor a \[Homo sapiens \(human\) \]](#)

Official Symbol [RGMA](#)

Synonyms RGMA; RGM domain family, member A; repulsive guidance molecule A; RGM;

Gene ID [56963](#)

mRNA Refseq [NM_020211](#)

Protein Refseq [NP_064596](#)

MIM [607362](#)

UniProt ID [Q96B86](#)

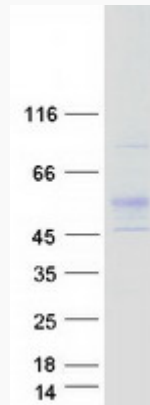
 Tel: 1-631-559-9269 1-516-512-3133

 Email: info@creative-biomart.com  Fax: 1-631-938-8127

 45-1 Ramsey Road, Shirley, NY 11967, USA



SDS-PAGE



Tel: 1-631-559-9269 1-516-512-3133

Email: info@creative-biomart.com Fax: 1-631-938-8127

45-1 Ramsey Road, Shirley, NY 11967, USA