

## Recombinant Rhesus monkey RGMA Protein, His-tagged

Cat. No. RGMA-857R Lot. No. (See product label)

### SPECIFICATION

<b>Product Overview</b>	Recombinant Rhesus monkey RGMA fused with His tag was produced in HEK293.
<b>Species</b>	Rhesus macaque
<b>Source</b>	HEK293
<b>Form</b>	Sterile PBS, pH 7.4
<b>Endotoxin</b>	< 1.0 EU per µg of the protein as determined by the LAL method
<b>Storage</b>	Store it under sterile conditions at -20 to -80 centigrade. It is recommended that the protein be aliquoted for optimal storage. Avoid repeated freeze-thaw cycles.
<b>Concentration</b>	0.5 mg/ml

### GENE INFORMATION

<b>Gene Name</b>	RGMA repulsive guidance molecule family member a [ <i>Macaca mulatta</i> ]
<b>Official Symbol</b>	RGMA
<b>Synonyms</b>	RGM domain family, member A
<b>Gene ID</b>	712949

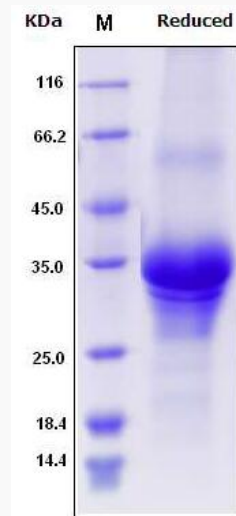
 Tel: 1-631-559-9269 1-516-512-3133

 Email: [info@creative-biomart.com](mailto:info@creative-biomart.com)  Fax: 1-631-938-8127

 45-1 Ramsey Road, Shirley, NY 11967, USA

mRNA Refseq [NM\\_001266917](#)

Protein Refseq [NP\\_001253846](#)



 Tel: 1-631-559-9269 1-516-512-3133

 Email: [info@creative-biomart.com](mailto:info@creative-biomart.com)  Fax: 1-631-938-8127

 45-1 Ramsey Road, Shirley, NY 11967, USA