

## Recombinant Human RGMB protein, His-tagged

Cat. No. RGMB-526H Lot. No. (See product label)

### SPECIFICATION

<b>Product Overview</b>	Recombinant Human RGMB protein(Q6NW40)(Gly46-Ser411), fused with C-terminal His tag, was expressed in HEK293.
<b>Species</b>	Human
<b>Source</b>	HEK293
<b>ProteinLength</b>	Gly46-Ser411
<b>Tag</b>	C-His
<b>Form</b>	Lyophilized from a 0.2 µm filtered solution of PBS, pH7.4.
<b>Bio-activity</b>	Immobilized Recombinant Human RGMB (C-6His) at 10 µg/ml (100 µl/well) can bind Recombinant Human BMP-4: Biotinylated by NHS-biotin prior to testing. The ED50 of Recombinant Human BMP-4 is 0.92 µg/ml.
<b>Molecular Mass</b>	41.2 KDa
<b>Endotoxin</b>	< 1 EU/µg as determined by LAL test.
<b>Purity</b>	Greater than 95% as determined by reducing SDS-PAGE.
<b>Storage</b>	Lyophilized protein should be stored at ≤ -20°C, stable for one year after receipt. Reconstituted protein solution can be stored at 2-8°C for 2-7 days.

 Tel: 1-631-559-9269 1-516-512-3133

 Email: [info@creative-biomart.com](mailto:info@creative-biomart.com)  Fax: 1-631-938-8127

 45-1 Ramsey Road, Shirley, NY 11967, USA

Aliquots of reconstituted samples are stable at  $\leq -20^{\circ}\text{C}$  for 1 months.

**Reconstitution**

Always centrifuge tubes before opening. Do not mix by vortex or pipetting.  
 It is not recommended to reconstitute to a concentration less than 100 $\mu\text{g}/\text{ml}$ .  
 Dissolve the lyophilized protein in distilled water.  
 Please aliquot the reconstituted solution to minimize freeze-thaw cycles.

**GENE INFORMATION**

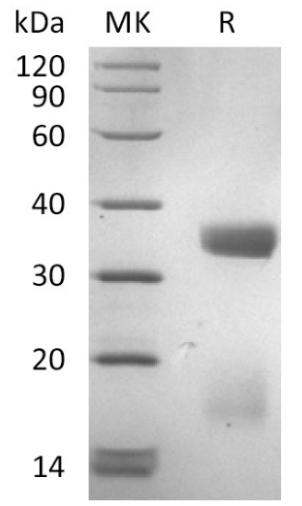
<b>Gene Name</b>	RGMB RGM domain family, member B [ Homo sapiens ]
<b>Official Symbol</b>	RGMB
<b>Synonyms</b>	RGMB; RGM domain family, member B; RGM domain family member B; FLJ90406; repulsive guidance molecule B; DRG11-responsive axonal guidance and outgrowth of neurite; DRAGON; MGC86970; DKFZp434P228;
<b>Gene ID</b>	285704
<b>mRNA Refseq</b>	NM_001012761
<b>Protein Refseq</b>	NP_001012779
<b>MIM</b>	612687
<b>UniProt ID</b>	Q6NW40

 Tel: 1-631-559-9269 1-516-512-3133

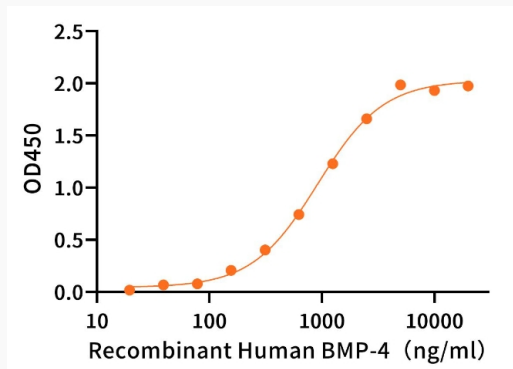
 Email: [info@creative-biomart.com](mailto:info@creative-biomart.com)  Fax: 1-631-938-8127

 45-1 Ramsey Road, Shirley, NY 11967, USA

**SDS-PAGE**



**ELISA**



 Tel: 1-631-559-9269 1-516-512-3133

 Email: [info@creative-biomart.com](mailto:info@creative-biomart.com)  Fax: 1-631-938-8127

 45-1 Ramsey Road, Shirley, NY 11967, USA