

Recombinant Human RHO protein, His-GST-tagged

Cat. No. RHO-30H Lot. No. (See product label)

SPECIFICATION

Product Overview	Recombinant Human RHO protein(Met1~Cys110), fused with Two N-terminal Tags, His tag and GST tag, was expressed in E. coli.
Species	Human
Source	E.coli
ProteinLength	Met1~Cys110
Form	PBS, pH7.4, containing 0.01% SKL, 5% Trehalose.
Molecular Mass	48kDa
Endotoxin	<1.0EU per 1µg (determined by the LAL method)
Purity	> 95%
Storage	Avoid repeated freeze/thaw cycles. Store at 2-8°C for one month. Aliquot and store at -80°C for 12 months.
Reconstitution	Reconstitute in ddH ₂ O to a concentration of 0.1-0.5 mg/mL. Do not vortex.

GENE INFORMATION

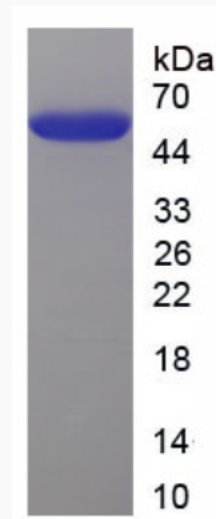
Gene Name RHO rhodopsin [Homo sapiens (human)]

 Tel: 1-631-559-9269 1-516-512-3133

 Email: info@creative-biomart.com  Fax: 1-631-938-8127

 45-1 Ramsey Road, Shirley, NY 11967, USA

Official Symbol	RHO
Synonyms	RP4; OPN2; CSNBAD1; RHO
Gene ID	6010
mRNA Refseq	NM_000539
Protein Refseq	NP_000530
MIM	180380
UniProt ID	P08100

SDS-PAGE

 Tel: 1-631-559-9269 1-516-512-3133

 Email: info@creative-biomart.com  Fax: 1-631-938-8127

 45-1 Ramsey Road, Shirley, NY 11967, USA