

Recombinant Human RHO protein, His-SUMO-tagged

Cat. No. RHO-3355H Lot. No. (See product label)

SPECIFICATION

Product Overview	Recombinant Human RHO protein(Met1~Asn73), fused with Two N-terminal Tags, His-tag and SUMO-tag, was expressed in E.coli.
Species	Human
Source	E.coli
ProteinLength	Met1~Asn73
Form	PBS, pH7.4, containing 0.01% SKL, 1mM DTT, 5% Trehalose and Proclin300.
Molecular Mass	27kDa
Endotoxin	<1.0EU per 1g (determined by the LAL method)
Purity	> 95%
Storage	Avoid repeated freeze/thaw cycles. Store at 2-8°C for one month. Aliquot and store at -80°C for 12 months.
Reconstitution	Reconstitute in 10mM PBS (pH7.4) to a concentration of 0.1-1.0 mg/mL. Do not vortex.

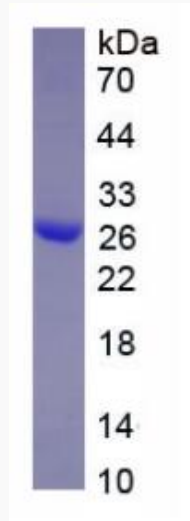
 Tel: 1-631-559-9269 1-516-512-3133

 Email: info@creative-biomart.com  Fax: 1-631-938-8127

 45-1 Ramsey Road, Shirley, NY 11967, USA



SDS-PAGE



Tel: 1-631-559-9269 1-516-512-3133

Email: info@creative-biomart.com Fax: 1-631-938-8127

45-1 Ramsey Road, Shirley, NY 11967, USA