

Recombinant Human RHOA Protein, MYC/DDK-tagged, C13 and N15-labeled

Cat. No. RHOA-160H Lot. No. (See product label)

SPECIFICATION

Product Overview	RHOA MS Standard C13 and N15-labeled recombinant protein (NP_001655) with a C-terminal MYC/DDK tag, was expressed in HEK293 cells.
Species	Human
Source	HEK293
Description	This gene encodes a member of the Rho family of small GTPases, which cycle between inactive GDP-bound and active GTP-bound states and function as molecular switches in signal transduction cascades. Rho proteins promote reorganization of the actin cytoskeleton and regulate cell shape, attachment, and motility. Overexpression of this gene is associated with tumor cell proliferation and metastasis. Multiple alternatively spliced variants have been identified. [provided by RefSeq, Sep 2015]
Molecular Mass	21.8 kDa
AA Sequence	MAAIRKKLIVGDGACGKTCLLIVFSKDQFPEVYVPTVFENYVADIEVDGKQVELALWDTAGQEDYDRLRPLSYDPTDVLIMCFSIDSPDSLENIPEKWTPEVKHFPCNPVPIILVGNKKDLRNDEHTRRELAKMKQEPVKPEEGRDMANRIGAFGYMECSAKTKDGVREVFEMATRAALQARRGKKKSGCLVLTRTRPLEQKLISEEDLAANDILDYKDDDDKV
Purity	> 80% as determined by SDS-PAGE and Coomassie blue staining
Stability	Stable for 3 months from receipt of products under proper storage and handling

 Tel: 1-631-559-9269 1-516-512-3133

 Email: info@creative-biomart.com  Fax: 1-631-938-8127

 45-1 Ramsey Road, Shirley, NY 11967, USA

conditions.

Storage Store at -80 centigrade. Avoid repeated freeze-thaw cycles.

Concentration 50 µg/mL as determined by BCA

Storage Buffer 100 mM glycine, 25 mM Tris-HCl, pH 7.3.

GENE INFORMATION

Gene Name [RHOA ras homolog family member A \[Homo sapiens \(human\) \]](#)

Official Symbol [RHOA](#)

Synonyms RHOA; ras homolog family member A; ARH12; ARHA; RHO12; RHOH12; transforming protein RhoA; Aplysia ras-related homolog 12; epididymis secretory sperm binding protein; oncogene RHO H12; small GTP binding protein RhoA; EC 3.6.5.2

Gene ID [387](#)

mRNA Refseq [NM_001664](#)

Protein Refseq [NP_001655](#)

MIM [165390](#)

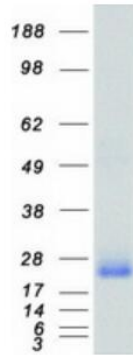
UniProt ID [P61586](#)

 Tel: 1-631-559-9269 1-516-512-3133

 Email: info@creative-biomart.com  Fax: 1-631-938-8127

 45-1 Ramsey Road, Shirley, NY 11967, USA

SDS-PAGE



 Tel: 1-631-559-9269 1-516-512-3133

 Email: info@creative-biomart.com  Fax: 1-631-938-8127

 45-1 Ramsey Road, Shirley, NY 11967, USA