

Recombinant Full Length Human RHOA Protein, C-Flag-tagged

Cat. No. RHOA-2117HFL Lot. No. (See product label)

SPECIFICATION

Product Overview	Recombinant Full Length Human RHOA Protein, fused to Flag-tag at C-terminus, was expressed in Mammalian cells.
Species	Human
Source	Mammalian Cells
Description	This gene encodes a member of the Rho family of small GTPases, which cycle between inactive GDP-bound and active GTP-bound states and function as molecular switches in signal transduction cascades. Rho proteins promote reorganization of the actin cytoskeleton and regulate cell shape, attachment, and motility. Overexpression of this gene is associated with tumor cell proliferation and metastasis. Multiple alternatively spliced variants have been identified.
Form	25 mM Tris HCl, pH 7.3, 100 mM glycine, 10% glycerol.
Molecular Mass	21.6 kDa
AA Sequence	MAAIRKKLIVVGDGACGKTCLLIVFSKDQFPEVYVPTVFENYVADIEVDGKQVELALW DTAGQEDYDRLR PLSYPDTDVILMCFSDSPDSLENIPEKWTPEVKHFPCPNVPIILVG NKKDLRNDEHTRRELAKMKQEPVK PEEGRDMANRIGAFGYMECSAKTKDGVREVF EMATRAALQARRGKKKSGCLVL TRTRPLEQKLISEEDLAANDILDYKDDDDKV
Purity	> 80% as determined by SDS-PAGE and Coomassie blue staining.

 Tel: 1-631-559-9269 1-516-512-3133

 Email: info@creative-biomart.com  Fax: 1-631-938-8127

 45-1 Ramsey Road, Shirley, NY 11967, USA

Stability	Stable for 12 months from the date of receipt of the product under proper storage and handling conditions. Avoid repeated freeze-thaw cycles.
Storage	Store at -80 centigrade.
Concentration	>50 ug/mL as determined by microplate BCA method.
Preparation	Recombinant protein was captured through anti-DDK affinity column followed by conventional chromatography steps.
Protein Families	Druggable Genome
Protein Pathways	Adherens junction, Axon guidance, Chemokine signaling pathway, Focal adhesion, Leukocyte transendothelial migration, Neurotrophin signaling pathway, Pathogenic Escherichia coli infection, Pathways in cancer, Regulation of actin cytoskeleton, T cell receptor signaling pathway, TGF-beta signaling pathway, Tight junction, Vascular smooth muscle contraction, Wnt signaling pathway
Full Length	Full L.

GENE INFORMATION

Gene Name	RHOA ras homolog family member A [Homo sapiens (human)]
Official Symbol	RHOA
Synonyms	ARHA; ARH12; RHO12; EDFAOB; RHOH12
Gene ID	387
mRNA Refseq	NM_001664.4

 Tel: 1-631-559-9269 1-516-512-3133

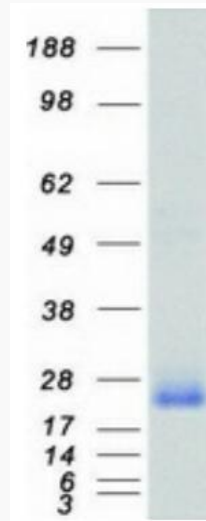
 Email: info@creative-biomart.com  Fax: 1-631-938-8127

 45-1 Ramsey Road, Shirley, NY 11967, USA

Protein Refseq NP_001655.1

MIM 165390

UniProt ID P61586



Coomassie blue staining of purified RHOA protein.

 Tel: 1-631-559-9269 1-516-512-3133

 Email: info@creative-biomart.com  Fax: 1-631-938-8127

 45-1 Ramsey Road, Shirley, NY 11967, USA