

Recombinant Human RHOA Protein, His-tagged

Cat. No. RHOA-2655H **Lot. No.** (See product label)

SPECIFICATION

Product Overview	Recombinant Human RHOA Protein (Met1-Cys190) with a N-His tag was expressed in E. coli.
Species	Human
Source	E.coli
ProteinLength	Met1-Cys190
Description	This gene encodes a member of the Rho family of small GTPases, which cycle between inactive GDP-bound and active GTP-bound states and function as molecular switches in signal transduction cascades. Rho proteins promote reorganization of the actin cytoskeleton and regulate cell shape, attachment, and motility. Overexpression of this gene is associated with tumor cell proliferation and metastasis. Multiple alternatively spliced variants have been identified.
Form	Freeze-dried powder
Molecular Mass	Predicted Molecular Mass: 25.1 kDa Accurate Molecular Mass: 28 kDa
Endotoxin	<1.0 EU per 1g (determined by the LAL method).
Purity	> 90%

 Tel: 1-631-559-9269 1-516-512-3133

 Email: info@creative-biomart.com  Fax: 1-631-938-8127

 45-1 Ramsey Road, Shirley, NY 11967, USA

Applications	Positive Control; Immunogen; SDS-PAGE; WB.
Stability	The thermal stability is described by the loss rate. The loss rate was determined by accelerated thermal degradation test, that is, incubate the protein at 37 centigrade for 48h, and no obvious degradation and precipitation were observed. The loss rate is less than 5% within the expiration date under appropriate storage condition.
Storage	Avoid repeated freeze/thaw cycles. Store at 2-8 centigrade for one month. Aliquot and store at -80 centigrade for 12 months.
Storage Buffer	20mM Tris, 150mM NaCl, pH8.0, containing 1mM EDTA, 1mM DTT, 0.01% SKL, 5% Trehalose and Proclin300.
Reconstitution	Reconstitute in 20mM Tris, 150mM NaCl (pH8.0) to a concentration of 0.1-1.0 mg/mL. Do not vortex.

GENE INFORMATION

Gene Name	RHOA ras homolog family member A [Homo sapiens (human)]
Official Symbol	RHOA
Synonyms	RHOA; ras homolog family member A; ARH12, ARHA, ras homolog gene family, member A; transforming protein RhoA; Rho12; RhoA; RHOH12; h12; oncogene RHO H12; rho cDNA clone 12; Aplysia ras-related homolog 12; small GTP binding protein RhoA; ras homolog gene family, member A; ARHA; ARH12; RHO12;
Gene ID	387
mRNA Refseq	NM_001664

 Tel: 1-631-559-9269 1-516-512-3133

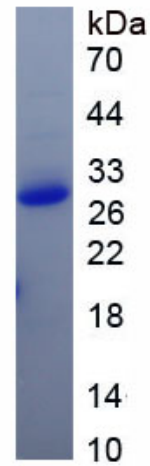
 Email: info@creative-biomart.com  Fax: 1-631-938-8127

 45-1 Ramsey Road, Shirley, NY 11967, USA

Protein Refseq NP_001655

MIM 165390

UniProt ID P61586



Tel: 1-631-559-9269 1-516-512-3133

Email: info@creative-biomart.com Fax: 1-631-938-8127

45-1 Ramsey Road, Shirley, NY 11967, USA