

## Recombinant Human RHOB Protein (Val48-Leu196), N-His tagged

Cat. No. RHOB-5860H Lot. No. (See product label)

### SPECIFICATION

<b>Product Overview</b>	Recombinant human RHOB (Val48-Leu196) fused with the N-His tag was expressed in E. coli.
<b>Species</b>	Human
<b>Source</b>	E.coli
<b>ProteinLength</b>	Val48-Leu196
<b>Form</b>	Lyophilized powder/frozen liquid
<b>Molecular Mass</b>	19.27 kDa
<b>Purity</b>	> 90 % as determined by SDS-PAGE
<b>Notes</b>	For research use only.
<b>Storage</b>	Use a manual defrost freezer and avoid repeated freeze thaw cycles. Store at 2 to 8 centigrade for one week. Store at -20 to -80 centigrade for twelve months from the date of receipt.
<b>Storage Buffer</b>	0.01M PBS, pH 7.4, 0.02 % NLS
<b>Reconstitution</b>	Reconstitute in sterile water for a stock solution.

 Tel: 1-631-559-9269 1-516-512-3133

 Email: [info@creative-biomart.com](mailto:info@creative-biomart.com)  Fax: 1-631-938-8127

 45-1 Ramsey Road, Shirley, NY 11967, USA

**Shipping** They are shipped out with dry ice/blue ice unless customers require otherwise.

## GENE INFORMATION

**Gene Name** RHOB ras homolog family member B [ Homo sapiens (human) ]

**Official Symbol** RHOB

**Synonyms** RHOB; ras homolog family member B; ARH6, ARHB, ras homolog gene family, member B; rho-related GTP-binding protein RhoB; MST081; oncogene RHO H6; RhoB; RHOH6; h6; rho cDNA clone 6; Aplysia RAS-related homolog 6; ras homolog gene family, member B; ARH6; ARHB; MSTP081;

**Gene ID** 388

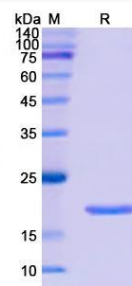
**mRNA Refseq** NM\_004040

**Protein Refseq** NP\_004031

**MIM** 165370

**UniProt ID** P62745

### SDS-PAGE



Tel: 1-631-559-9269 1-516-512-3133

Email: [info@creative-biomart.com](mailto:info@creative-biomart.com) Fax: 1-631-938-8127

45-1 Ramsey Road, Shirley, NY 11967, USA