

Recombinant Full Length Human RHOT1 Protein, GST tagged

Cat. No. RHOT1-13H Lot. No. (See product label)

SPECIFICATION

Species	Human
Source	Wheat Germ (in vitro)
ProteinLength	1-618 aa
Description	Predicted to enable GTP binding activity and GTPase activity. Involved in several processes, including mitochondrial outer membrane permeabilization; mitochondrion transport along microtubule; and regulation of mitochondrion organization. Located in mitochondrial outer membrane.
Molecular Mass	101.9 kDa
AA Sequence	<p>MKKDVRILLVGEPRVGKTSLIMSLVSEEFPEEVPRAEEITIPADVTPERVPTHIVDYS EAEQSDEQLHQEISQANVICIVYAVNNKHSIDKVTSRWIPLINERTDKDSRLPLILVGN KSDLVEYSSMETILPIMNQYTEIETCVECSAKNLKNISELYYAQKAVLHPTGPLYCPE EKEMKPACIKALTRIFKISDQDNDGTLNDAELNFFQRICFNTPLAPQALEDVKNVVRK HISDGVADSGTLKGFLLHTLFIQRGRHETTWTVLRRFYDDDLTPPEYLFPLLKIP PDCTTELNHAYLFLQSTFDKHDLRDCALSPDELKDLFKVFPYIPWGPDVNNTVCT NERGWITYQGFLSQWTLTTYLDVQRCLEYLGYLGYSILTEQESQASAVTVTRDKKID LQKKQTQRNVFRCNVIGVKNCGKSGVLQALLGRNLMRQKKIREDHKSYYAINTVYV YGQEKYLLLHDISESEFLTEAEIICDVVCLVYDVSNPKSFEYCARIFKQHFMDSRIPCLI VAAKSDLHEVKQEYSISPTDFCRKHKMPPQAFTCNTADAPSKDIFVKLTTMAMYPH ARLRMCTCNRCTFCICQNFLNSDLLQSVKNKIFTAVLNRHVTQADLKSSTFWLRAS</p>

 Tel: 1-631-559-9269 1-516-512-3133

 Email: info@creative-biomart.com  Fax: 1-631-938-8127

 45-1 Ramsey Road, Shirley, NY 11967, USA



FGATVFAVLGFAMILYKALLKQR

Quality Control Testing

12.5% SDS-PAGE Stained with Coomassie Blue.

Applications

Enzyme-linked Immunoabsorbent Assay Western Blot (Recombinant protein)
Antibody Production Protein Array

Notes

Best use within three months from the date of receipt of this protein.

Storage

Store at -80 centigrade. Aliquot to avoid repeated freezing and thawing.

Storage Buffer

50 mM Tris-HCl, 10 mM reduced Glutathione, pH=8.0 in the elution buffer.

GENE INFORMATION

Gene Name

RHOT1 ras homolog family member T1 [Homo sapiens (human)]

Official Symbol

RHOT1

Synonyms

RHOT1; ras homolog family member T1; ARHT1; MIRO1; MIRO-1; mitochondrial Rho GTPase 1; mitochondrial Rho (MIRO) GTPase 1; rac-GTP binding protein-like protein; ras homolog gene family, member T1; EC 3.6.5.-

Gene ID

55288

mRNA Refseq

NM_001033566

Protein Refseq

NP_001028738

MIM

613888

Tel: 1-631-559-9269 1-516-512-3133

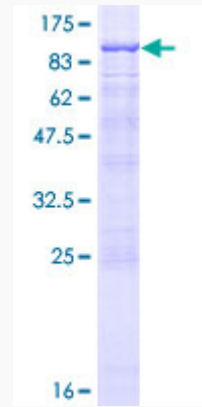
Email: info@creative-biomart.com Fax: 1-631-938-8127

45-1 Ramsey Road, Shirley, NY 11967, USA

UniProt ID

Q8IXI2

SDS-PAGE



 Tel: 1-631-559-9269 1-516-512-3133

 Email: info@creative-biomart.com  Fax: 1-631-938-8127

 45-1 Ramsey Road, Shirley, NY 11967, USA