

Recombinant Chicken RHOT1 Protein (1-219 aa), His-SUMO-tagged

Cat. No. RHOT1-2027C Lot. No. (See product label)

SPECIFICATION

Product Overview	Recombinant Chicken RHOT1 Protein (1-219 aa) is produced by E. coli expression system. This protein is fused with a 6xHis-SUMO tag at the N-terminal. Research Area: Tags & Cell Markers. Protein Description: Partial.
Species	Chicken
Source	E.coli
ProteinLength	1-219 aa
Description	Mitochondrial GTPase involved in mitochondrial trafficking. Probably involved in control of anterograde transport of mitochondria and their subcellular distribution (By similarity).
Form	Tris-based buffer,50% glycerol
Molecular Mass	41.0 kDa
AA Sequence	MKKDVRILLVGEPRVGKTSLIMSLVSEEFPEEVPPRAEEITIPADVTPERVPHTHIVDYS EAEQNDEQLYHEISQANVICIVYAVNNKNSIDKVTSRWIPLINERTDKDSRLPLILVGN KSDLVEYSSMETILPIMNQYTEIETCVECSAKNLKNRSELFYYAQKAVLHPTGPLYCP EEKEMKPACIKALTRIFRISDQDNDGTLNDAELNFFQRICFNT
Purity	> 90% as determined by SDS-PAGE.

 Tel: 1-631-559-9269 1-516-512-3133

 Email: info@creative-biomart.com  Fax: 1-631-938-8127

 45-1 Ramsey Road, Shirley, NY 11967, USA

Notes	Repeated freezing and thawing is not recommended. Store working aliquots at 4 centigrade for up to one week.
Storage	The shelf life is related to many factors, storage state, buffer ingredients, storage temperature and the stability of the protein itself. Generally, the shelf life of liquid form is 6 months at -20 centigrade/-80 centigrade. The shelf life of lyophilized form is 12 months at -20 centigrade/-80 centigrade.
Concentration	A hardcopy of COA with reconstitution instruction is sent along with the products.

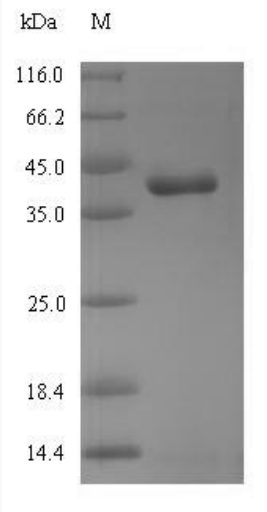
GENE INFORMATION

Gene Name	RHOT1 ras homolog family member T1 [Gallus gallus (chicken)]
Official Symbol	RHOT1
Synonyms	RHOT1; MIRO-1 Alternative name(s): Ras homolog gene family member T1;
Gene ID	417410
mRNA Refseq	NM_001006208
Protein Refseq	NP_001006208
UniProt ID	Q5ZM73

 Tel: 1-631-559-9269 1-516-512-3133

 Email: info@creative-biomart.com  Fax: 1-631-938-8127

 45-1 Ramsey Road, Shirley, NY 11967, USA



(Tris-Glycine gel) Discontinuous SDS-PAGE (reduced) with 5% enrichment gel and 15% separation gel.

 Tel: 1-631-559-9269 1-516-512-3133

 Email: info@creative-biomart.com  Fax: 1-631-938-8127

 45-1 Ramsey Road, Shirley, NY 11967, USA