

Recombinant Full Length Human Rab interacting lysosomal protein like 1 Protein, GST tagged

Cat. No. RILPL1-12HFL Lot. No. (See product label)

SPECIFICATION

Product Overview	human RILPL1 full-length ORF (NP_847884.1, 1-362aa) recombinant protein with GST-tag at N-terminal was expressed in Wheat Germ (in vitro).
Species	Human
Source	Wheat Germ
ProteinLength	1-362aa
Description	Predicted to enable protein dimerization activity. Predicted to be involved in several processes, including cilium assembly; epithelial cell morphogenesis; and protein transport from ciliary membrane to plasma membrane. Located in cytosol; nucleoplasm; and plasma membrane.
Tag	N-GST
Molecular Mass	68.6 kDa
AA Sequence	MDVYDIASLVGHEFERVIDQHGCEAIARLMPKVVRVLEILEVLVSRHHVAPELDELRL ELDRLRLERMMDRIEKERKHQKELELVEDVWRGEAQDLLSQAQLQEENKQLMTNLS HKDVNFSEEEFQKHEGMSERERQVMKKLKEVVDKQRDEIRAKDRELGLKNEDVEA LQQQQTRLMKINHDLRHRVTVVEAQQKALIEQKVELEADLQTKEQEMGSLRAELGK LRERLQGEHSQNGEEEPETEPVGEESISDAEKVAMDLDPNRPRFTLQELRDVLHE RNELKSKVFLQEEELAYYKSEEMEEENRIPQPPPIAHPRTSPQPESGIKRLIFTAIMPM

 Tel: 1-631-559-9269 1-516-512-3133

 Email: info@creative-biomart.com  Fax: 1-631-938-8127

 45-1 Ramsey Road, Shirley, NY 11967, USA

	VAAGLIIDDPTLQPVRRLVSLV
Quality Control Testing	12.5% SDS-PAGE Stained with Coomassie Blue.
Applications	Enzyme-linked Immunoabsorbent Assay Western Blot (Recombinant protein) Antibody Production Protein Array
Notes	Best use within three months from the date of receipt of this protein.
Storage	Store at -80 centigrade. Aliquot to avoid repeated freezing and thawing.
Storage Buffer	50 mM Tris-HCl, 10 mM reduced Glutathione, pH=8.0 in the elution buffer.

GENE INFORMATION

Gene Name	RILPL1 Rab interacting lysosomal protein like 1 [Homo sapiens (human)]
Official Symbol	RILPL1
Synonyms	RILPL1; Rab interacting lysosomal protein-like 1; RILP-like protein 1; FLJ39378; rab-interacting lysosomal-like protein 1; RLP1; GOSPEL; MGC99793; MGC105128;
Gene ID	353116
mRNA Refseq	NM_178314
Protein Refseq	NP_847884
MIM	614092

 Tel: 1-631-559-9269 1-516-512-3133

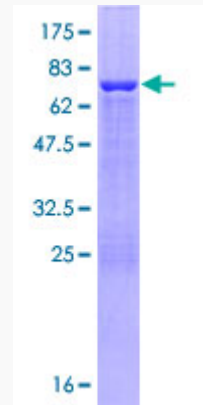
 Email: info@creative-biomart.com  Fax: 1-631-938-8127

 45-1 Ramsey Road, Shirley, NY 11967, USA

UniProt ID

Q5EBL4

SDS-PAGE



 Tel: 1-631-559-9269 1-516-512-3133

 Email: info@creative-biomart.com  Fax: 1-631-938-8127

 45-1 Ramsey Road, Shirley, NY 11967, USA