

# Recombinant Human RILPL2 Protein, Myc/DDK-tagged, C13 and N15-labeled

**Cat. No.** RILPL2-642H    **Lot. No.** (See product label)

## SPECIFICATION

<b>Product Overview</b>	RILPL2 MS Standard C13 and N15-labeled recombinant protein (NP_659495) with a C-terminal MYC/DDK tag, was expressed in HEK293 cells.
<b>Species</b>	Human
<b>Source</b>	HEK293
<b>Description</b>	This gene encodes a protein that contains a rab-interacting lysosomal protein-like domain. This protein may be involved in regulating lysosome morphology. This protein may also be a target for the Hepatitis C virus and assist in viral replication. Alternate splicing results in multiple transcript variants.
<b>Molecular Mass</b>	24 kDa
<b>AA Sequence</b>	MEEPPVREEEEEEGEEDERDEVGPEGALGKSPFQLTAEDVYDISYLLGRELMALG SDPRVTQLQFKVVRVLEMLEALVNEGSLALEELKMERDHLRKEVEGLRRQSPASG EVNLGPNKMVVDLTDPNRPRFTLQELRDVLQERNKLKSQLLVVQEELQCYKSGLIIP REGPGGRREKDAVVTSAGNAGRNKEEKTIKKLFFFRSGKQTRTRPLEQKLISEEDL AANDILDYKDDDDKV
<b>Purity</b>	> 80% as determined by SDS-PAGE and Coomassie blue staining
<b>Stability</b>	Stable for 3 months from receipt of products under proper storage and handling conditions.

 Tel: 1-631-559-9269    1-516-512-3133

 Email: [info@creative-biomart.com](mailto:info@creative-biomart.com)     Fax: 1-631-938-8127

 45-1 Ramsey Road, Shirley, NY 11967, USA

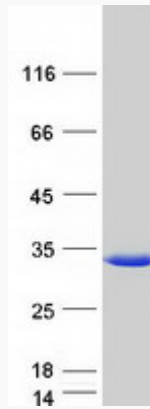
<b>Storage</b>	Store at -80 centigrade. Avoid repeated freeze-thaw cycles.
<b>Concentration</b>	50 µg/mL as determined by BCA
<b>Storage Buffer</b>	100 mM glycine, 25 mM Tris-HCl, pH 7.3.
<b>GENE INFORMATION</b>	
<b>Gene Name</b>	RILPL2 Rab interacting lysosomal protein-like 2 [ Homo sapiens (human) ]
<b>Official Symbol</b>	RILPL2
<b>Synonyms</b>	RILPL2; Rab interacting lysosomal protein-like 2; RILP-like protein 2; FLJ30380; FLJ32372; MGC7036; p40phox-binding protein; rab-interacting lysosomal protein-like 2; RLP2;
<b>Gene ID</b>	196383
<b>mRNA Refseq</b>	NM_145058
<b>Protein Refseq</b>	NP_659495
<b>MIM</b>	614093
<b>UniProt ID</b>	Q969X0

 Tel: 1-631-559-9269 1-516-512-3133

 Email: [info@creative-biomart.com](mailto:info@creative-biomart.com)  Fax: 1-631-938-8127

 45-1 Ramsey Road, Shirley, NY 11967, USA

**SDS-PAGE**



 Tel: 1-631-559-9269 1-516-512-3133

 Email: [info@creative-biomart.com](mailto:info@creative-biomart.com)  Fax: 1-631-938-8127

 45-1 Ramsey Road, Shirley, NY 11967, USA