

# Recombinant Human RING1 Protein, Myc/DDK-tagged, C13 and N15-labeled

**Cat. No.** RING1-3363H    **Lot. No.** (See product label)

## SPECIFICATION

### Product Overview

RING1 MS Standard C13 and N15-labeled recombinant protein (NP\_002922) with a C-terminal MYC/DDK tag, was expressed in HEK293 cells.

### Species

Human

### Source

HEK293

### Description

This gene belongs to the RING finger family, members of which encode proteins characterized by a RING domain, a zinc-binding motif related to the zinc finger domain. The gene product can bind DNA and can act as a transcriptional repressor. It is associated with the multimeric polycomb group protein complex. The gene product interacts with the polycomb group proteins BMI1, EDR1, and CBX4, and colocalizes with these proteins in large nuclear domains. It interacts with the CBX4 protein via its glycine-rich C-terminal domain. The gene maps to the HLA class II region, where it is contiguous with the RING finger genes FABGL and HKE4.

### Molecular Mass

42.4 kDa

### AA Sequence

MTTPANAQNASKTWELSLYELH RTPQEAIMDGTEIAVSPRSLHSELMCPICLDMLKN  
TMTTKECLHRFCSDCIVTALRSGNKECPTCRKKLVSKRSLRPDPNFDALISKIYPSRE  
EYEAHQDRVLIRLSRLHNQQALSSSIEEGLRMQAMHRAQRVRRPIPGSDQTTTMSG  
GEGEPGEGEGDGEDVSSDSAPDSAPGPAPKRPRGGGAGGSSVGTGGGGTGGVG  
GGAGSEDSGDRGGTLGGGTLGPPSPPGAPSPPEPGGEIELVFRPHLLVEKGEYC

 Tel: 1-631-559-9269    1-516-512-3133

 Email: [info@creative-biomart.com](mailto:info@creative-biomart.com)     Fax: 1-631-938-8127

 45-1 Ramsey Road, Shirley, NY 11967, USA

QTRYVKTTGNATVDHLSKYLALRIALERRQQQEAGEPGGGPGGGASDTGGPDGCGG  
 EGGGAGGGDGPEEPALPSLEGVSEKQYTIYIAPGGGAFTTLNGSLTLELVNEKFWK  
 VSRPLELCYAPTKDPKTRTRPLEQKLISEEDLAANDILDYKDDDDKV

**Purity** > 80% as determined by SDS-PAGE and Coomassie blue staining

**Stability** Stable for 3 months from receipt of products under proper storage and handling conditions.

**Storage** Store at -80 centigrade. Avoid repeated freeze-thaw cycles.

**Concentration** 50 µg/mL as determined by BCA

**Storage Buffer** 100 mM glycine, 25 mM Tris-HCl, pH 7.3.

## GENE INFORMATION

**Gene Name** RING1 ring finger protein 1 [ Homo sapiens (human) ]

**Official Symbol** RING1

**Synonyms** RING1; ring finger protein 1; E3 ubiquitin-protein ligase RING1; RNF1; polycomb complex protein RING1; really interesting new gene 1 protein; RING1A;

**Gene ID** 6015

**mRNA Refseq** NM\_002931

**Protein Refseq** NP\_002922

**MIM** 602045

 Tel: 1-631-559-9269 1-516-512-3133

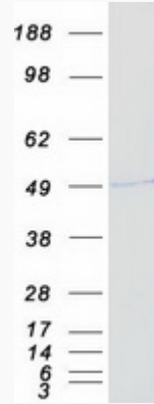
 Email: [info@creative-biomart.com](mailto:info@creative-biomart.com)  Fax: 1-631-938-8127

 45-1 Ramsey Road, Shirley, NY 11967, USA

UniProt ID

Q06587

SDS-PAGE



 Tel: 1-631-559-9269 1-516-512-3133

 Email: [info@creative-biomart.com](mailto:info@creative-biomart.com)  Fax: 1-631-938-8127

 45-1 Ramsey Road, Shirley, NY 11967, USA