

Recombinant Full Length Human RIPK1 Protein, N-His-tagged

Cat. No. RIPK1-14HFL Lot. No. (See product label)

SPECIFICATION

Product Overview	Recombinant Full Length Human RIPK1 Protein, fused to His-tag at N-terminus, was expressed in E. coli.
Species	Human
Source	E.coli
Description	This gene encodes a member of the receptor-interacting protein (RIP) family of serine/threonine protein kinases. The encoded protein plays a role in inflammation and cell death in response to tissue damage, pathogen recognition, and as part of developmental regulation. RIPK1/RIPK3 kinase-mediated necrosis is referred to as necroptosis. Genetic disruption of this gene in mice results in death shortly after birth.
Form	25mM Tris, pH8.0, 150 mM NaCl, 10% glycerol, 1% Sarkosyl.
Molecular Mass	75.8 kDa
AA Sequence	A DNA sequence encoding human full-length RIPK1.
Purity	> 80% as determined by SDS-PAGE and Coomassie blue staining.
Stability	Stable for 12 months from the date of receipt of the product under proper storage and handling conditions. Avoid repeated freeze-thaw cycles.
Storage	Store at -80 centigrade.

 Tel: 1-631-559-9269 1-516-512-3133

 Email: info@creative-biomart.com  Fax: 1-631-938-8127

 45-1 Ramsey Road, Shirley, NY 11967, USA

Concentration	>50 ug/mL as determined by microplate BCA method.
Protein Families	Druggable Genome, Protein Kinase
Protein Pathways	Apoptosis, Cytosolic DNA-sensing pathway, RIG-I-like receptor signaling pathway, Toll-like receptor signaling pathway
Full Length	Full L.

GENE INFORMATION

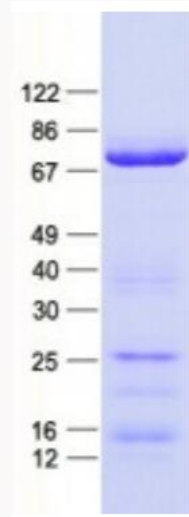
Gene Name	RIPK1 receptor interacting serine/threonine kinase 1 [Homo sapiens (human)]
Official Symbol	RIPK1
Synonyms	RIP; RIP1; AIEFL; IMD57; RIP-1
Gene ID	8737
mRNA Refseq	NM_003804.6
Protein Refseq	NP_003795.2
MIM	603453
UniProt ID	Q13546

 Tel: 1-631-559-9269 1-516-512-3133

 Email: info@creative-biomart.com  Fax: 1-631-938-8127

 45-1 Ramsey Road, Shirley, NY 11967, USA

SDS-PAGE



 Tel: 1-631-559-9269 1-516-512-3133

 Email: info@creative-biomart.com  Fax: 1-631-938-8127

 45-1 Ramsey Road, Shirley, NY 11967, USA