

Recombinant Full Length Human RIPK1 protein, GST-tagged

Cat. No. RIPK1-42H Lot. No. (See product label)

SPECIFICATION

Product Overview	Recombinant Human RIPK1 full-length ORF (ADR83242.1, 1 a.a. - 671 a.a.) protein with GST tag at N-terminal was expressed in Wheat Germ (in vitro).
Species	Human
Source	Wheat Germ
ProteinLength	1-671 a.a.
Description	Receptor-interacting serine/threonine-protein kinase 1 is an enzyme that in humans is encoded by the RIPK1 gene. RIPK1 is known to have function in a variety
Molecular Mass	100.3kDa
AA Sequence	<p>MQPDMSLNVIKMKSSDFLESAELDSGGFGKVS LCFHRTQGLMIMKTVYKGPNCIEH NEALLEEAKMMNRLRHSRVV KLLGVIIIEGKYSLVMEYMEKGNLMHVLKAEMSTPLS VKGRIILEIIIEGMCYLHGKGV IHKDLKPENILVDNDFHIKIADLGLASFKMWSKLNNEEH NELREVDGTAKKNGGTLYYMAPEHLNDVNAKPTEKSDVYSFAVVLWAIFANKEPYE NAICEQQLIMCIKSGNRPDVDDITEYCPREIISLMKLCWEANPEARPTFPGIEEKFRPF YLSQLEESVEEDVKSLKKEYSNENAVVKRMQSLQLDCVAVPSSRSNSATEQPGSLH SSQGLGMGPVEESWFAPSLEHPQEENEPSLQSKLQDEANYHLYGSRMDRQTKQQ PRQNVAYNREEERRRRVSHDPFAQQRPYENFQNTTEGKGTAYSSAASHGNAVHQP SGLTSQPQVLYQNNGLYSSHGFGTRPLDPGTAGPRVWYRPIPSHMPSLHNIPVET NYLGNTPTMPFSSLPPTDESIKYTIYNSTGIQIGAYNYMEIGGTSSSLLDSTNTNFKEE PAAKYQAIFDNTTSLTDKHLDP IRENLGKHWKNCARKLGFTQSQIDEIDHYERDGL</p>

 Tel: 1-631-559-9269 1-516-512-3133

 Email: info@creative-biomart.com  Fax: 1-631-938-8127

 45-1 Ramsey Road, Shirley, NY 11967, USA

KEKVYQMLQKWVMREGIKGATVGKLAQALHQCSRIDLLSSLIYVSN

Applications

Enzyme-linked Immunoabsorbent Assay, Western Blot (Recombinant protein), Antibody Production, Protein Array

Quality Control Test

12.5% SDS-PAGE Stained with Coomassie Blue

Notes

Best use within three months from the date of receipt of this protein.

Storage

Store at -80 centigrade. Aliquot to avoid repeated freezing and thawing.

Storage Buffer

50 mM Tris-HCl, 10 mM reduced Glutathione, pH=8.0 in the elution buffer.

GENE INFORMATION

Gene Name

RIPK1 receptor interacting serine/threonine kinase 1 [Homo sapiens (human)]

Official Symbol

RIPK1

Synonyms

RIP; RIP1; RIP-1

Gene ID

8737

mRNA Refseq

HQ258488

Protein Refseq

ADR83242

MIM

603453

UniProt ID

Q13546

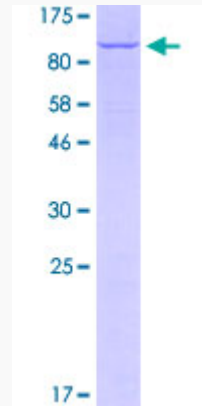
 Tel: 1-631-559-9269 1-516-512-3133

 Email: info@creative-biomart.com  Fax: 1-631-938-8127

 45-1 Ramsey Road, Shirley, NY 11967, USA

Chromosome
Location

6p25.2



 Tel: 1-631-559-9269 1-516-512-3133

 Email: info@creative-biomart.com  Fax: 1-631-938-8127

 45-1 Ramsey Road, Shirley, NY 11967, USA